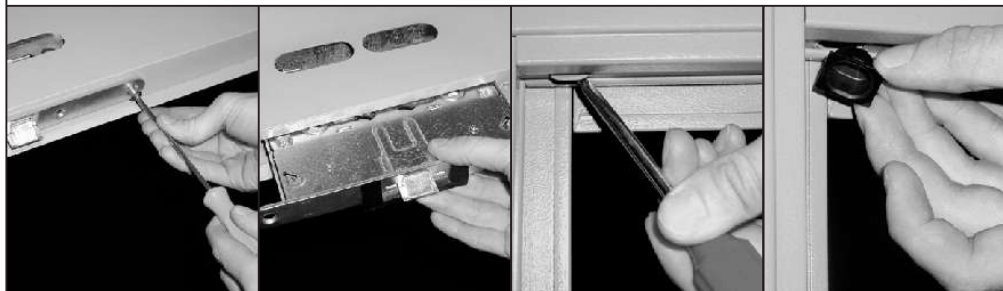


## KIT REVER SECUR FOR SINGLE AND DOUBLE LEAF DOORS

**2. Kit to transform REVER doors into REVER SECUR doors (for single leaf doors and main leaf of double leaf doors) with 3 closing-points lock including all necessary hardware and cylinder.**

### Assemble instruction

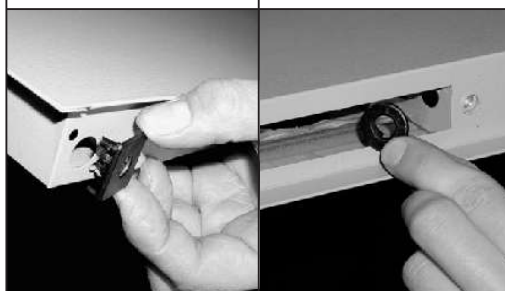


Unfasten the two lock screws.

Extract the standard lock.

Drill the prepared parts in frame (1).

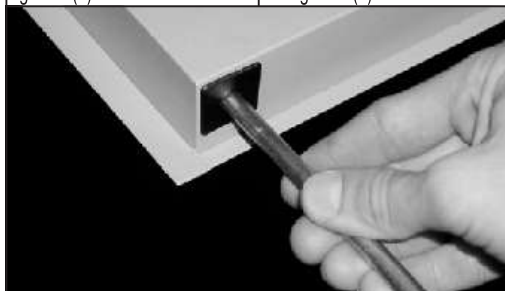
Insert containing cap in the frame (2).



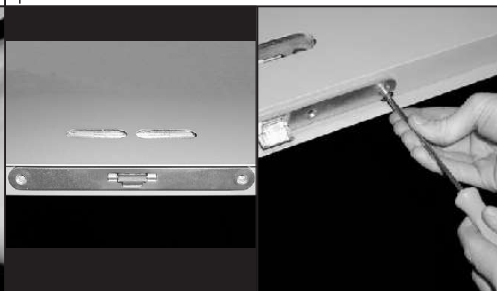
Insert in the leaf the two rod guides (3).

Insert in the lock-mass the two rod guides (4).

Insert partially the SECUR lock. The lock must be in the locked position.



Fit the two rods (5) into the leaf with the marked side (6) towards the edge of leaf.



Insert completely the lock catching the two rods (7).

Fasten the lock with the two screws.

