



<i>Denomination</i>	M3tir/M3Xtir EMERGENCY EXIT DEVICE
<i>Name and address of the producer</i>	NINZ S.p.A. - corso Trento 2/A I-38061 ALA (TN) - ITALY
<i>Year application trademark</i>	2014
<i>Standard</i>	EN 179:2008
<i>Certification authority no.</i>	0425
<i>CE certification no.</i>	0425 - CPR - 2149
<i>Classification</i>	3 7 7 B 1 3 4 2 A D
<i>Type Grade</i>	A - lever handle activation 2 - protrusion up to 100mm

<i>Commercial codes</i>	<i>item</i>
M3tir emergency handle	4203101.031
M3Xtir emergency handle	4203101.032
M3tir/MAC3 emergency handle	4203101.033
M3Xtir/MAC3 emergency handle	4203101.034
M3tir/MAC3 FAILSAFE emergency handle	4203101.035
M3Xtir/MAC3 FAILSAFE emergency handle	4203101.036

- Classification no.*
- 1st Character - grade 3 - Category of use: high frequency
 - 2nd Character - grade 7 - Durability: 200.000 cycles
 - 3rd Character - grade 7 - Mass of the door: over 200kg
 - 4th Character - grade B - Suitable for use on fire/smoke rated doors
 - 5th Character - grade 1 - Safety: suitable for emergency exits
 - 6th Character - grade 3 - Highly resistant to corrosion 96h
 - 7th Character - grade 4 - Safety of goods: 3000N
 - 8th Character - grade 2 - Protrusion of the device: up to 100mm
 - 9th Character - grade A - Activation type: lever handle activation
 - 10th Character - grade D - Suitable for single or, with inactive leaf normally closed, double exit door, inwardly opening

Suitable for: single exit doors or for active (main) leaf of double exit doors provided that the inactive leaf remains normally closed and opened by lock with deadbolt (019) only; with dimensions of leaves up to 1350x2880mm, mass up to 300kg/leaf, mounted on hinges or pivots, with fire resistance up to EI₂120 - REI120 and smoke proof. Projection of the handle 67mm.

SYMBOLS EMPLOYED

- CAUTION**
Indicates a danger that threatens people and/or material goods. Failure to observe the warnings indicated by this symbol may have serious consequences, such as personal injury and property damage.
- ATTENTION**
Indicates a danger that threatens material goods. Failure to observe the warnings indicated by this symbol may result in damage to material goods.
- NOTICE**
Warnings related to important technical aspects.

PRODUCT DESCRIPTION

Emergency devices for one-leaved doors or for the active leaf of two-leaved doors located at emergency exits and activated by lever handle. Composed of installation plates and double square spindle in galvanized steel, internal and external lever handle with cover plate in black plastic (M3tir) or brushed stainless steel (M3Xtir), panic safe lock and nickel-plated brass cylinder with three keys.

This product does not contain or release any hazardous materials, as per UNI EN standard no. 179 appendix ZA.

OPERATION MODE

From the push side the door cannot be opened if the panic safe lock is closed by key whereas opening is possible from the pull side at any time by using the lever handle.

WARNINGS

The M3tir/M3Xtir handle for emergency exit is intended for the installation on doors to be used by people that are accustomed to use the controls of the panic devices for escape routes. Therefore their use is suitable when a panic situation is very unlikely. The safety features of this product are of fundamental importance to ensure its conformity with EN 179. It is strictly forbidden to introduce any type of modifications apart from those described in these installation instructions.

RECOMMENDATIONS

To ensure high level of human safety and appropriate safety levels for material goods, the handle for emergency exit must be installed on doors and doorframes that are in good conditions. The installation of the door itself, therefore, should be checked to ensure that it was installed properly and that nothing obstructs its normal movement.

If rebate sealing are mounted on the door, make sure they do not inhibit proper functioning of the emergency exit device.

The fastening instructions in the present document should be followed scrupulously during installation. Once installation is complete, the installer should give this document to the owner of the activity.

For securing the door in the closed position, do not employ any other latching devices than those specified in the present document. This does not preclude the installation of automatic closing devices.

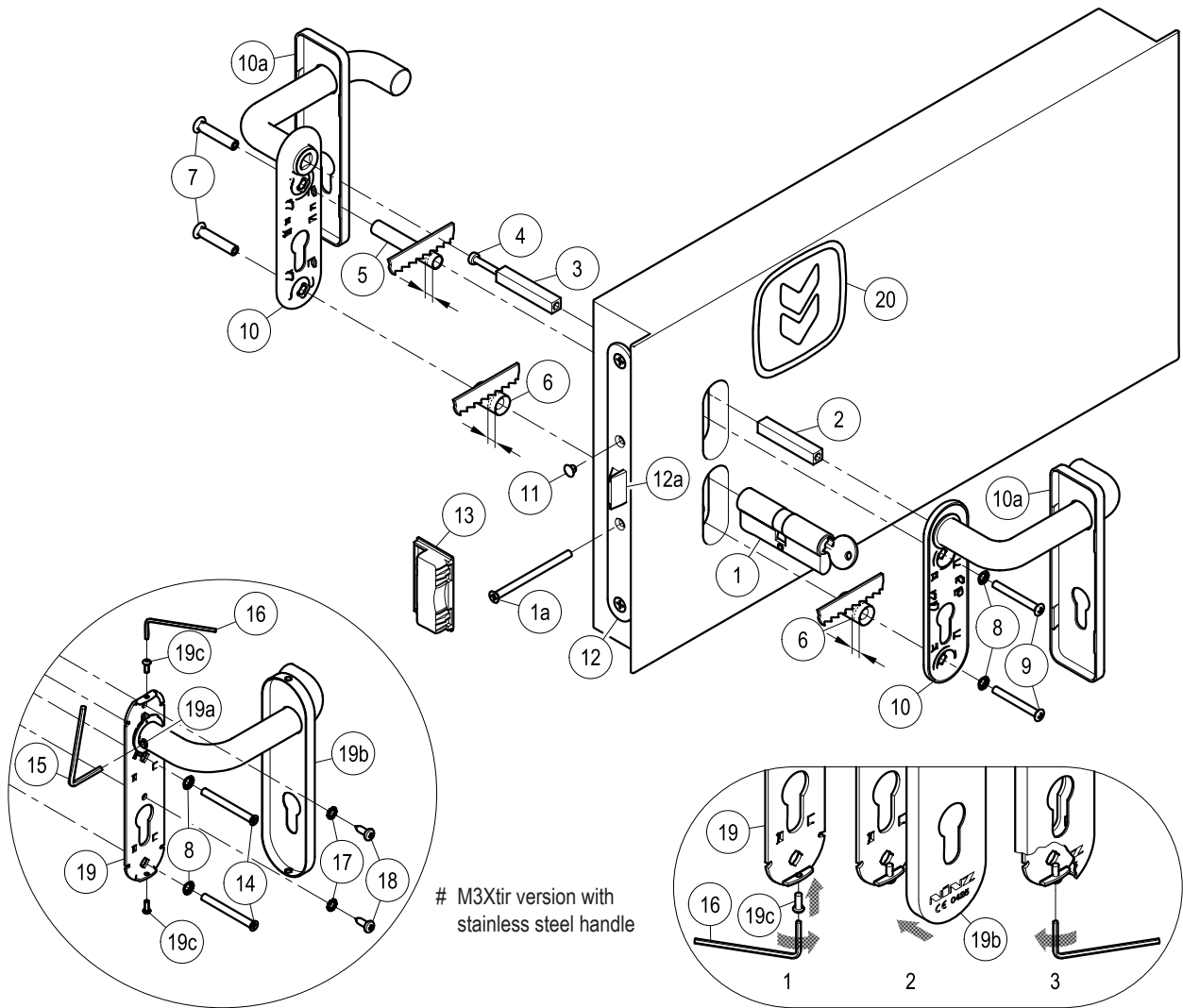
The M3tir/M3Xtir emergency device is also designed for installation on hollow metal doors with an internal cell structure.

If a door closer is needed to return the door to the closed position, care should be taken not to make the opening step more difficult for children, the elderly and the disabled.

A pictogram (arrow) should be positioned immediately above the handle activation lever on the internal side of the door.

All of the included components described herein must be positioned and mounted in conformity with the present document.

Any cylinder supplied by the customer must comply with DIN standard 18254.



M3Xtir version with stainless steel handle

CONTENTS OF THE M3tir/M3Xtir PANIC DEVICE PACKAGE

position	pcs.	description
1, 1a	01	Double nickel-plated cylinder with three keys and fastening screw
2, 3	01	Threaded square spindle 9x9x(55+55)mm
4	01	M5 screw for threaded square spindle
5	01	Spacer Ø10,3mm
6	02	Spacer Ø15mm
7	02	M5 threaded insert
8	02	Countersunk toothed washer
9	02	M5x45mm countersunk pan head screw
10	02	Handle with galvanized steel installation plate
10a	02	Black plastic cover plate
11	01	Black cap hole Ø8,8mm

position	pcs.	description
# 14	02	M5x50mm countersunk flat head screw
# 15	01	S3 hex key
# 16	01	S2 hex key
# 17	04	Toothed washer
# 18	04	Pan head self tapping screw Ø4,2x13mm
# 19, 19a	02	Stainless steel handle with galvanized steel installation plate and fastening socket set screw
# 19b	02	Stainless steel cover plate
# 19c	02	M3x8mm pan head screw
20	01	Adhesive pictogram (green arrow)
-	01	M3tir/M3Xtir handle set installation instructions


Please note that article 4 of the MD of 03 November 2004 obliges the installer to write up, sign and provide the owner of the activity with a declaration of proper installation that makes explicit reference to the instructions supplied by the exit device manufacturer.

- The panic lock (12) and the respective strike box (counter-strike) (13) are delivered already mounted on the door!



TOOLS REQUIRED

Medium-sized Philips-head screwdriver or electric screwdriver, electric drill with Ø2mm drill bit for steel, fine-toothed hack-saw.


IMPORTANT

- Installation should be carried out by qualified personnel only and in strict conformity with the instructions supplied.
- For a correct installation all supplied components must be used, including spacers and toothed washers.
-  - No variations are allowed, and only components indicated in the package contents may be used.
- Before proceeding with installation, check the package contents to ensure that no pieces are missing.
- Any different installation configuration from that illustrated on page 2/4 is not allowed.

INSTALLATION



- Insert the key, rotate the cam in vertical position and insert the cylinder (1) into lock (12). Use the screw (1a) to fasten it provisionally; then remove the key.
- Insert the square spindles (2 and 3) into lock, connecting and tightening with the screw (4). Verify that the latch bolt (12a) can be retreated independently from push side and from pull side.
- Adjust the plastic spacers (5 and 6) to the thickness of the leaf so that they do not protrude more than 1mm from it.
- In case of M3Xtir stainless steel handle (19), screw onto their installation plates the screws (19c), just enough to insert the cover plates (19b).
- Insert the two threaded inserts (7) in the installation plate of one handle (10 or 19), making sure that they are well-centred.
- Insert the two spacers (5 and 6) over the threaded inserts and apply the handle on the push-side of the door, being careful to center the square spindle and the inserts over their respective holes.
- Apply the second handle (10 or 19) to the pull-side of the door after inserting the screws (9 or 14), toothed washers (8) and spacer (6). Center the square spindle, cylinder and screws, starting the screws by hand before fastening them with the screwdriver, avoiding any deformation of the installation plates.
- Use the handles from pull-side and push-side to ensure that the latch bolt (12a) of the panic safe lock opens easily and fully.
- In case of M3Xtir stainless steel handle, tighten the two socket set screws (19a) with the S3 hex wrench (15).
- Finish fastening of the cylinder (1), insert the little cap hole (11) in the open hole of the panic safe lock (12).
-  - Use the M3tir or M3Xtir handle to ensure that the latch bolt opens easily and fully; use the same method to check the opening of the latch bolt by using the key. Test the door in both open and closed positions, from both sides of the door. If necessary file down the plastic strike box (13), when the opening becomes difficult due to friction.
- In case of M3Xtir stainless steel handle (19) it is also necessary to fasten their installation plates using the Ø4,2x13mm self-tapping screws (18) and their toothed washers (17) after drilling holes in the metal panel with the Ø2mm drill bit. Insert the covers (19b) onto the handles (drw. 2). Using the S2 hex key (16) to unscrew the screws (19c) until the covers become fixed, avoiding any deformations (drw. 3). Insert and fasten the socket set screws (19a) well with the S3 hex key (15).
- In case of M3tir plastic handle (10), clip the cover plates (10a) manually onto their installation plates.
- Apply the pictogram (20) with the green arrow on the internal surface of the door, just above the emergency handle.
-  - Lastly, use a dynamometer to measure the force required on the lever of the handle to free the lock. Record this force measurement in the present document.



USE


- Ensure that the door always opens easily.
- Avoid unnecessary strains on or handling of the handle.
- Protect the handle from external atmospheric agents.
- Ensure that nothing hinders the free movement of the lever of handle.
- Do not paint the lock.
- Use the handle properly, do not pull them in the wrong direction.
- Do not leave the key in the lock.
-  - Make sure that any damaged or malfunctioning parts are replaced immediately.

MAINTENANCE

To ensure that door usage conforms with regulations, the following maintenance checks should be carried out at least once a month:

- Confirm that all of the installed components correspond with those listed in the present instructions and that no other latching devices than those originally installed have been added to the door.
- Inspect and activate the emergency handle to verify that all of its components are in satisfactory operational condition.
- Use a dynamometer to confirm that the release force shows no significant differences from the forces recorded at the time of installation.
-  - Check whether all screws are fully tightened, tightening any that may have loosened.
- Check whether handle and key can be moved with minimal effort, and that the latch bolt of the safe lock retreats from the strike box without offering resistance. If the door has become difficult to open due to friction, the resistance can be reduced by filing the strike box down to the appropriate height.
- Ensure that the latch bolt exits completely when the handle is released.
-  - Check whether the inserts and strike boxes are blocked in any way and eliminate any obstructions.
- This product don't requires any special maintenance. Grease should be used to lubricate periodically the internal workings of lock and handle (do not use the spray for the MAC locks).
- For normal cleaning use mild detergents for M3tir handle or a cleaning agent designed specifically for stainless steel for M3Xtir handle.

-  - Any adjustments that become necessary must be carried out by qualified personnel using original NINZ replacement parts.
-  - The owner of the activity is responsible for keeping the declaration of correct installation on file, conducting proper emergency device maintenance in accordance with all of the manufacturer's maintenance guidelines, keeping maintenance and check-up records and preserving the present document.



ICIM
Certificato di costanza delle prestazioni
Certificate of constancy of performance

ALLEGATO AL / ANNEX TO

Certificato N.
 Certificate No. **0425 – CPR – 2149**

In conformità al Regolamento 305/2011/EU del Parlamento Europeo e del Consiglio del 9 marzo 2011 (Regolamento Prodotti da Costruzione o CPR), questo certificato si applica al prodotto da costruzione.
 In compliance with Regulation 305/2011/EU of the European Parliament and of the Council of 9 March 2011 (the Construction Products Certification or CPR), this certificate applies to the construction product.

MODELLI MODELS	Modelli / Models HOT-CIL, HOT-CIL-X Serratura anta attiva / Active leaf lock art. 3201001.011 (AP sp ti), Contropiastre / striking plates . 2401006, 2401005, 2401015, 2401014, Maniglie / Handles art. 3101001.012 (M2), 3101017.002 (M2X)		
CLASSIFICAZIONE CLASSIFICATION	3 7 7 B 1 4 4 2 A D		
MODELLI MODELS	Modelli / Models M3 TIR, M3X TIR Serratura anta attiva / Active leaf lock art. 3201001.051 (016 tir REV), 3201001.049 (MAC3 sx), 3201001.050 (MAC3 dx), Contropiastre / striking plates . 2401006, 2401005, 2401015, 2401014, 3201001.023, 3201001.007 Maniglie / Handles art. 3101001.009 (M3), 3101017.003 (M3X)		
CLASSIFICAZIONE CLASSIFICATION	3 7 7 B 1 3 4 2 A D		
<small>SISTEMA DI VALUTAZIONE E VERIFICA DELLA COSTANZA DELLA PRESTAZIONE SYSTEM OF ASSESSMENT AND VERIFICATION OF CONSTANCY OF PERFORMANCE</small>			
<table border="1" style="border-collapse: collapse;"> <tr> <td style="width: 80%;"></td> <td style="text-align: center;">1</td> </tr> </table>			1
	1		


ICIM S.p.A.

EMMISSIONE
 ISSUE
 05/06/2014
ICIM S.p.A. a socio unico - Piazza Don Enrico Mappelli, 75 - 20099 Sesto San Giovanni (MI)

3202952_0017

Annex Page 1/5

SPARE PARTS (see exploded drawing at page 2/4)

position	code	description
2, 3, 4, 5, 6, 7, 8, 9, 10, 10a, 11	3101001.009	Set dual-lever handle - black plastic (M3tir)
# 2, 3, 4, 5, 6, 7, 8, 11, 14, 15, 16, 17, 18, 19, 19a, 19b, 19c	3101017.003	Set dual-lever handle - stainless steel (M3Xtir)
		Standard nickel-plated double cylinder
1, 1a	4202101.001	40/40 for Proget and Univer thk60
1, 1a	4202101.002	35/35 for Univer thk50
1, 1a	4202101.003	30/30 for Rever
12	3201001.051	Panic safe lock to pull (016 tir REV)
13	4212024.001	Set of 10 Proget strike box lock
13	4212025.001	Set of 10 Univer thk60 strike box lock
13	4212026.001	Set of 10 Univer thk50 strike box lock
13	4212027.001	Set of 10 Rever strike box lock

FOR REPLACEMENTS USE ORIGINAL NINZ REPLACEMENT PARTS FROM ITS FULL CERTIFIED SYSTEM ONLY!

Certified components for M3tir/M3Xtir

- Emergency exit devices models: "M3 TIR", "M3X TIR"
 Panic safe locks: item 3201001.051 (016 tir REV),
 3201001.049 (MAC3 sx),
 3201001.050 (MAC3 dx)
 Lock strike boxes: items 2401006, 2101005, 2401015, 2401014
 Operating elements: items 3101001.009 (M3), 3101017.003 (M3X)

PROPER DISASSEMBLY

When some parts or all of the emergency device needs to be replaced, the general guideline is to reverse the order of the original installation instructions. To replace the lock, all parts of the emergency handle in the lock zone must be disassembled, including the cylinder. The lock itself (12) can be removed by unscrewing the two frontal screws.

This operation should be carried out with great care in order not to damage or move the components located inside lock housing!

MAINTENANCE RECORD			
date	description of the intervention	release force checked	operator
.....
.....
.....
.....
.....
.....
.....
.....
.....
.....
.....
.....
.....
.....
.....
.....
.....
.....
.....
.....
.....
.....

These instructions should be given to the owner of the activity, who shall preserve them as a record of the maintenance operations carried out on the panic exit device.