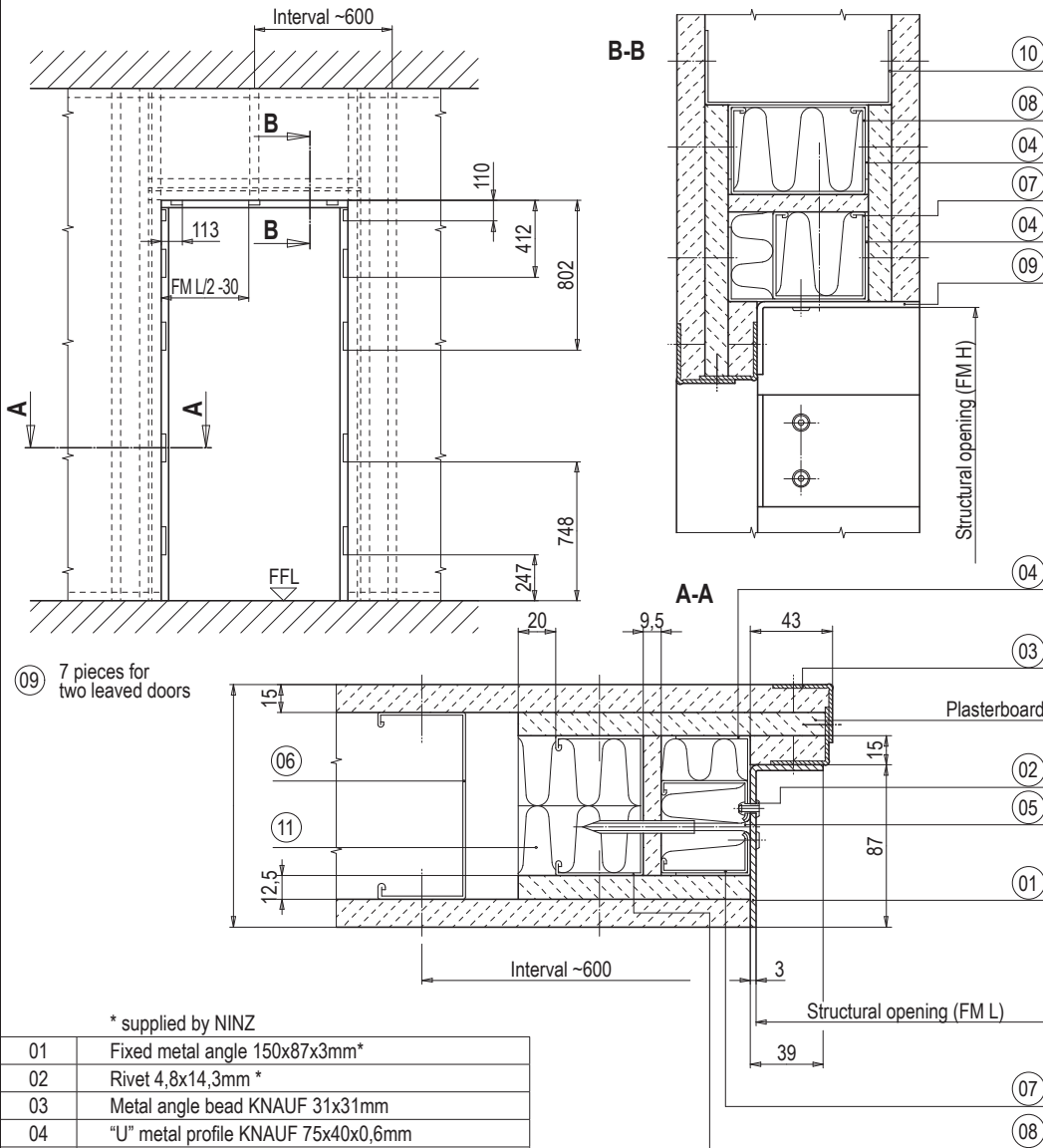


INSTALLATION, USE AND MAINTENANCE HANDBOOK FOR PROGET REI 60 FIRE-RATED DOORS INSTALLATION ONTO PLASTERBOARD PARTITION

NINZ S.p.A.
corso Trento, 2/A
I-38061 ALA (TN) / ITALY

I54-GB
5001019/2
07/14 1/4

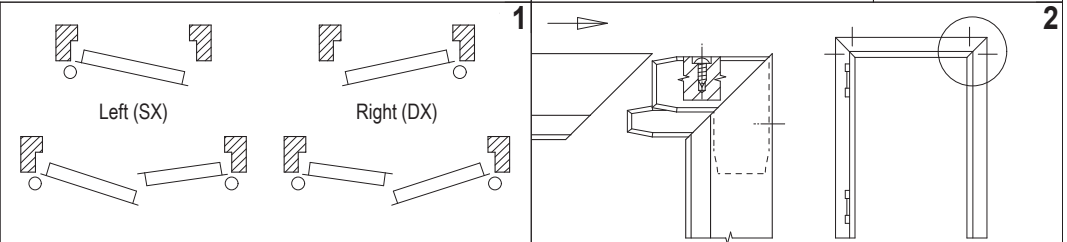
CONSTRUCTION OF THE PLASTERBOARD PARTITION



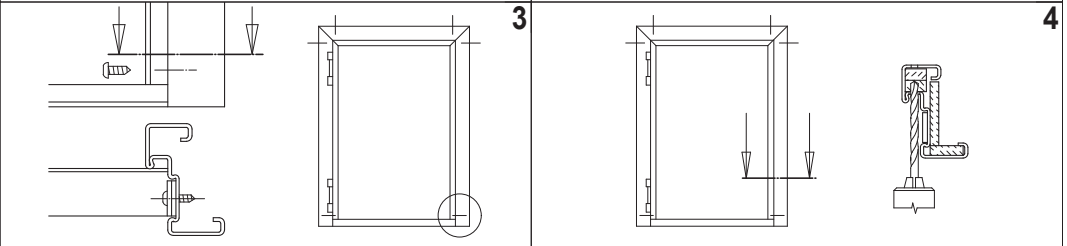
09 7 pieces for two leaved doors

* supplied by NINZ

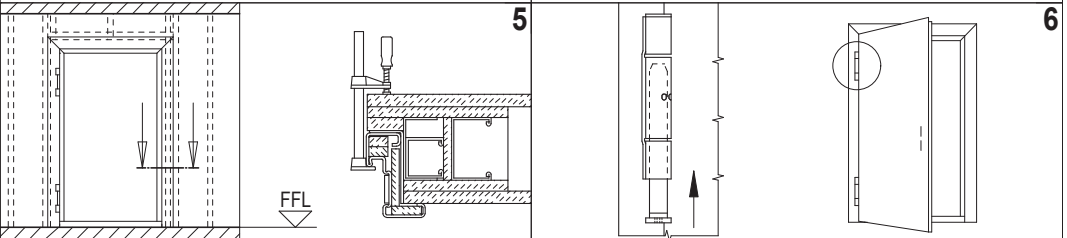
01	Fixed metal angle 150x87x3mm*	09	Fixing metal angle 60x87x3mm *
02	Rivet 4,8x14,3mm *	10	"U" metal profile KNAUF 100x40x0,6mm
03	Metal angle bead KNAUF 31x31mm	11	Mineral wool density 70kg/m ³
04	"U" metal profile KNAUF 75x40x0,6mm		
05	Self-tapping screw KNAUF 3,1x90mm		
06	"C" metal profile KNAUF 100x47x0,6mm		
07	"C" metal profile KNAUF 50x47x0,6mm		
08	"C" metal profile KNAUF 75x47x0,6mm		



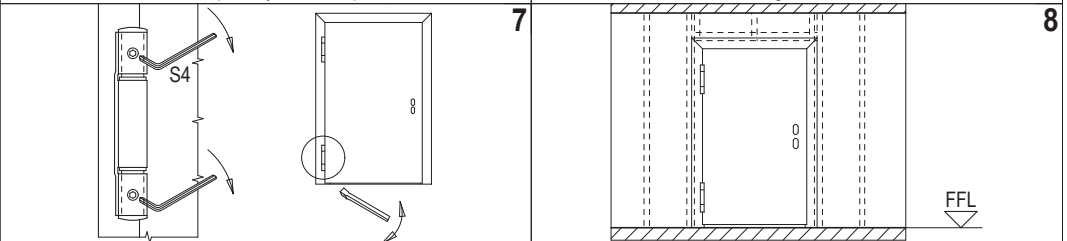
For door with environmental characteristics see also the enclosed complementary installation instructions. Verify the opening direction of the door and check the correspondence between door and wall opening dimension.



Unfasten the screws at the bottom part of the two jambs and fix them again, inserting the jamb spacer, without removing the self-expanding gasket.



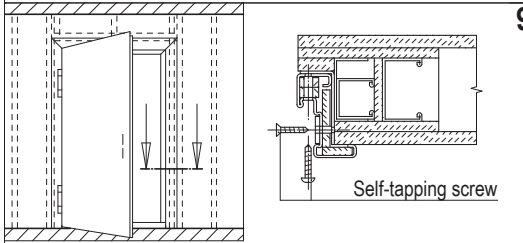
Insert the doorframe in the wall opening respecting the finished floor level and fasten it temporarily with clamps.



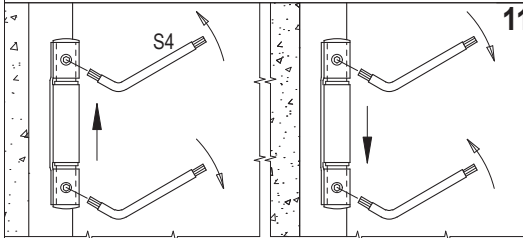
Close the door and screw on the two socked set screw to bring in contact the ball of the bearing hinge. Perform this operation very carefully with the aid of a lever.

Verify the squareness of the whole door. Block definitively the doorframe with clamps, respecting the FFL and the plumb-line.

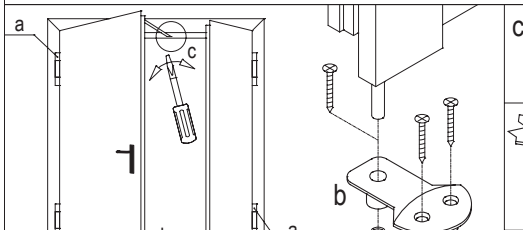
INSTALLATION, USE AND MAINTENANCE HANDBOOK FOR PROGET REI 60 FIRE-RATED DOORS - INSTALLATION ONTO PLASTERBOARD PARTITION



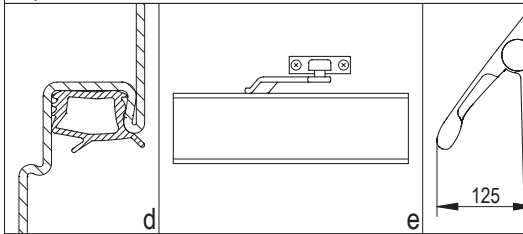
Open the door, drill the holes in the supporting structure and fasten the doorframe with the supplied screws.



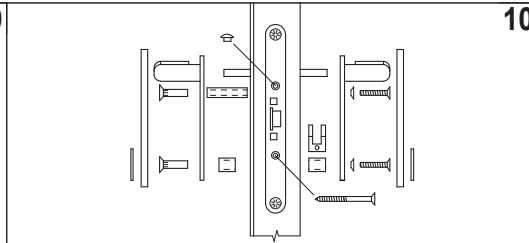
To raise the door leaf: unscrew the upper socked set screw, screw on the lower one, screw on the upper one again. To lower the door leaf: unscrew the lower socked set screw, screw on the upper one. Operation to be carried out with the maximal care, with the aid of a lever.



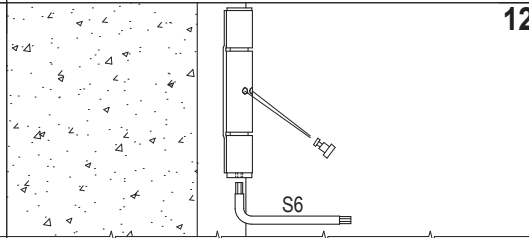
The RC2 closing regulator instead of RC-STD (part. "c") is mandatory for two leaved doors with environmental characteristics.



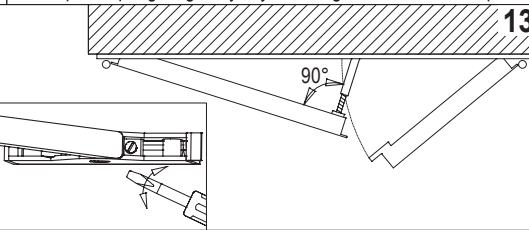
Optional: d) rebate sealing - e) overhead doorcloser (the spring must be anyhow slightly loaded) - Exus, Twist or Slash panic bar.



Remove the spacers between doorframe and leaf and assemble the handle. Remove the jamb spacer. Remove the sticker from the doorframe by means of hot hair, or clean any remains using the product "Ecosolvente A/955" by "Recoll".

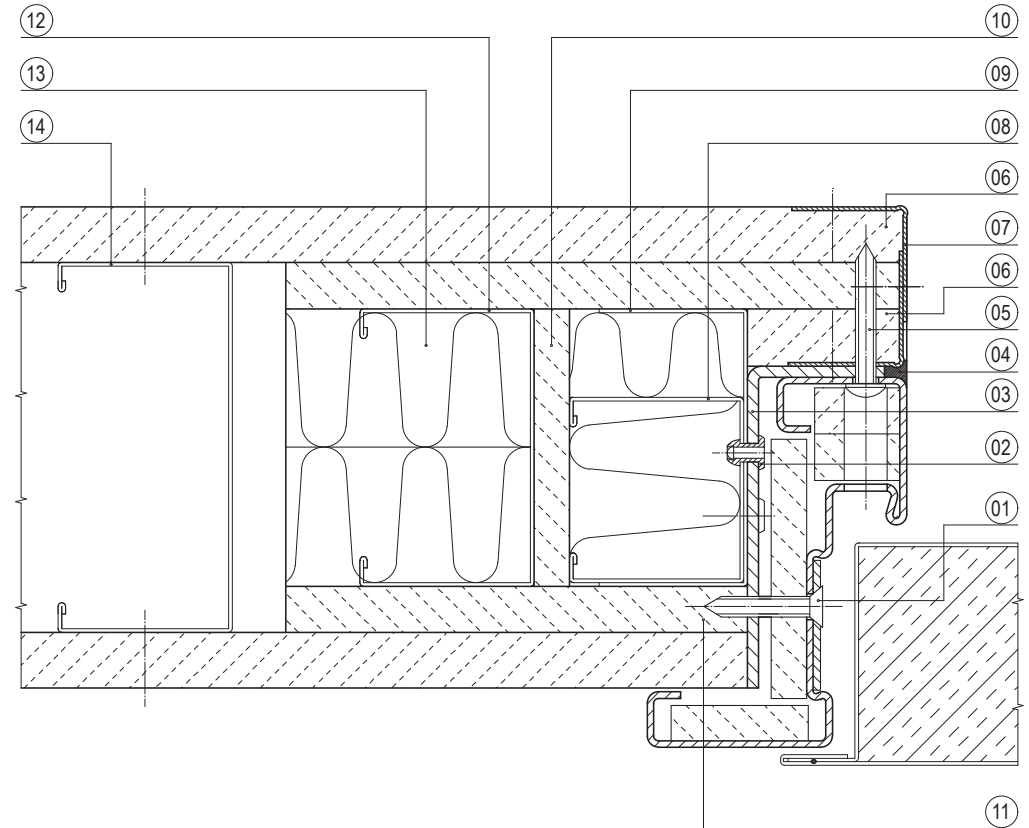


Wind up the spring hinge in the opening direction, inserting the tension pin. Even if self closing is not needed or door closer is installed, wind up the spring hinge anyway, blocking it with the tension pin.



For two-leaved doors use the same assemble procedure adding: a) load two pivot with springs; b) install the catch set in the floor; c) in case of RC/STD adjust the closing regulator (arm position perpendicular to the main leaf).

HORIZONTAL SECTION



* supplied by NINZ

01	Self-tapping screw *	08	"C" metal profile KNAUF 50x47x0,6mm
02	Rivet *	09	"U" metal profile KNAUF 75x40x0,6mm
03	Fixing metal angle *	10	Plasterboard KNAUF GKB 9,5mm
04	Silicone	11	Plasterboard KNAUF GKF AK 12,5mm
05	Self-tapping screw *	12	"C" metal profile KNAUF 75x47x0,6mm
06	Plasterboard KNAUF GKF AK 15mm	13	Mineral wool density 70kg/m ³
07	Metal angle bead KNAUF 31x31mm	14	"C" metal profile KNAUF 100x47x0,6mm

INSTALLATION, USE AND MAINTENANCE HANDBOOK FOR PROGET REI 60 FIRE-RATED DOORS - INSTALLATION ONTO PLASTERBOARD PARTITION

I54-GB 3/4

GENERAL NOTES

STANDARD: the assemble instructions have to be followed in every detail to respect the test conditions and assure the perfect functioning of the door, including the self-closing. Furthermore a regular service is necessary.

LIABILITY: it is duty of the installer to follow the installation instructions in any detail, specifically point 7, 11 and 12, in order to guarantee the safety of the end-users.

PLASTERBOARDS PARTITION: it is duty of the buyer to build the partitions to comply with the present assembling instructions and to take any precaution to avoid mechanical resistance loss in case of partitions higher than 2700mm.

FINISHING: the serial door is finished with an epoxy-polyester powder paint oven-baked at 180 °C. The surface is orange-skin and particularly resistant.
In case an additional paint is desired we advise to follow these instructions:
- make smooth the surfaces with sandpaper and dust them;
- give a first hand of opaque 2 components epoxide using the product ALCEA EPOX 5203 / 0059 (beige);
- finish the surfaces with enamels or paints to your choice.

CLEANING: the doors are supplied from the factory clean and packed. We suggest to use a clothe and soaped water only. Do not scratch the surfaces.

WARRANTY: the manufacturer gives warranty as per Italian law (C.C.1495). Any claim for missing or damaged goods have to be recorded by inserting a written remark in the delivery notes and must be notified the maximum within eight days from the date of materials receipt.

CURRENT CE MARKED ACCESSORIES FOR FIRE-RATED DOORS:

Std015 lock:	CE 0497/CPD/4265/11	- EN 12209:2003/AC	- 3 M 3 1 0 C 2 H A 2 0
Hinges:	CE 0789-CPD-2005	- EN 1935:2004	- 4 7 7 1 1 4 0 14
RC/STD closing regulator:	CE CPD-0425-1153	- EN 1158:2003	- 3 5 5/3 1 1 4

The CE marking of the Std 019 lock for inactive leaf of two-leaved doors is only valid if a panic bar or emergency handle is installed onto main leaf.

USE AND MAINTENANCE INSTRUCTIONS FOR PROGET DOORS

All fire-rated doors located in escape routes need regular maintenance in order to verify that no damage occurred and that they close regularly. The scheduled maintenance shall guarantee that the leaf swings correctly and that the self closing mechanism works properly. The doors shall be kept free from any obstructions.

Any 5.000 opening cycles but at least every 6 months the following operations shall be carried out:

- lubricating the ball-bearing hinge;
- lubricating the spring hinge and the spring after removing the tension pin;
- wind up the spring inserting the tension pin. Verify that the closing force is sufficient to shut the door if opened to 30±2°;
- lubricating the lock and the latch.

For double leaf doorsets additional controls shall be carried out:

- verify the functionality of the secondary leaf's rods and lubricate its guide rail;
- clean the hole of the floor catch set;
- lubricate the lock and the self-locking device (top onto passive leaf);
- verify the regular functionality of the closing regulator (in case of RC/STD, the arm must be in perpendicular position to the main leaf); lubricate the mobile parts of the closing regulator.

Verify the regular functionality of the doors accessories (handle, panic bar, overhead doorcloser etc.). Their mobile parts shall be lubricated too, following the dedicated instructions.

In case of irregular functioning of the door or its accessories contact an authorized installer or replace the damaged accessories.

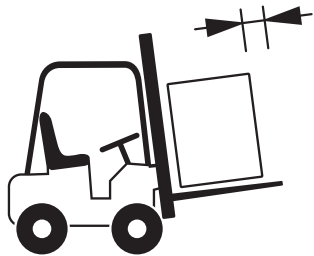
Note: for lubrication use viscous products.

HANDLING AND STORAGE - COMPLAINTS

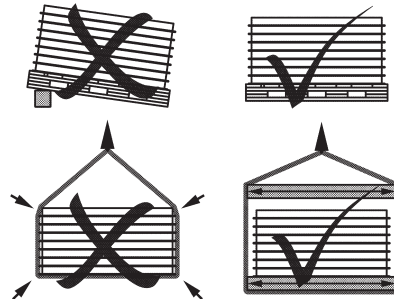
HANDLING: in case of handling with webbing slings/ropes, place them under the feet of the pallet; avoid to place them under the boards; avoid that the action of slings/ropes produces too much pressure upon the doors, by means of spacers interposed in the upper part. Do not handle the leaves using suction caps.

STORAGE: it is duty of the company/person taking over the doors to store them in a suitable place so that they will be protected from the natural agents and from the direct sun rays. If during transportation or truck unloading it rains or snows on the doors it is necessary to remove immediately the nylon film from each leaf and doorframe put them in vertical position to dry appropriately.

COMPLAINTS: in case of external visible defects on doors, they have to be marked in the copy of the transportation document to be returned to the forwarder and notified to the manufacturer by registered mail within 48 hours. We remember that according to our general conditions intrinsic defects have to be notified to the manufacturer within 8 days from the delivery date by registered mail. Goods with defects never have be utilized or assembled, they should be stored at disposal for controls by the manufacturer appointed person.



Move the materials with appropriate means.



Store and handle the materials with care.



Assemble by qualified staff only.



Do not expose the materials to the natural agents.



**PROGET DOORS
INTERNAL USE**

FIRE RATED:

- Combo Sa
- Combo S200/GS; Combo S200/GSV
- Combo dB Sa/GS; Combo dB Sa/GSV

MULTIPURPOSE:

- Combo Sa
- Combo S200/GS; Combo S200/GSV
- Combo dB/GS; Combo dB/GSV

ATTENTION: For all warehousing, handling, installation, usage and maintenance related operations please follow carefully the INSTALLATION INSTRUCTIONS for PROGET doors and the present COMPLEMENTARY INSTALLATION INSTRUCTION.

In order to reach the additional performance characteristics (smoke control, acoustic insulation, thermal insulation, wind permeability, water tightness) please follow the INSTALLATION INSTRUCTIONS and the present COMPLEMENTARY INSTALLATION INSTRUCTIONS carefully.

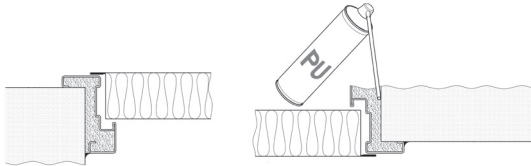


Figure A
(refers only to PROGET MULTIPURPOSE doors)

After the installation of the frame, fill the space between wall and frame with polyurethane foam. In alternative use rockwool or plaster. When solidified, remove eventual residuals from overspraying

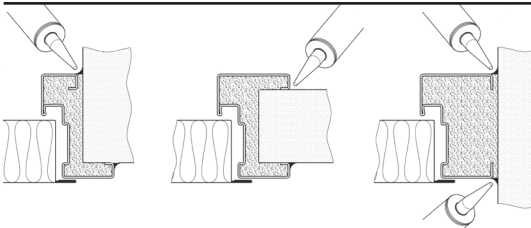


Figure B
(refers to PROGET FIRE RATED and MULTIPURPOSE doors)

Seal the wall facing perimeter of the door frame on the push side of the door with neutral silicone (not supplied). In case of smoke control performances Sa and S200 and/or frame type Tunnel/Blockframe, seal on both sides of the frame.

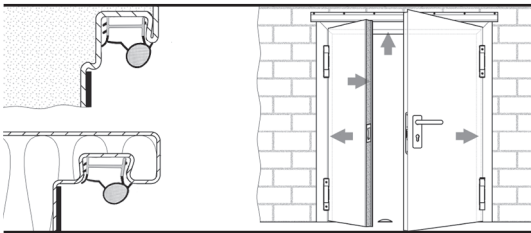


Figure C
(refers to PROGET FIRE RATED and MULTIPURPOSE doors)

Cut the rubber gasket at 45 degree angles in the upper corners of the frame and insert with pressure into the respective groove of the frame (see arrows in the drawings). For double doors, press the rubber gasket also into the groove of the central upright of the secondary leaf with the profile facing in the correct direction (see drawing). For fire rated doors with double leaves only, cut the rubber gasket in proximity of the closing regulator RC/STD, making sure to cut only the necessary.

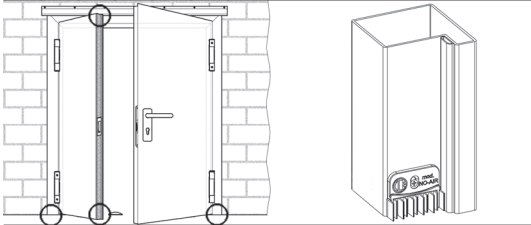


Figure D
(refers to PROGET FIRE RATED and MULTIPURPOSE doors)

Install the rubber gasket "NO AIR" for all double doors shipped with your product. Position and install strictly as explained in the instructions (IF13-I) supplied with the KIT "NO AIR".

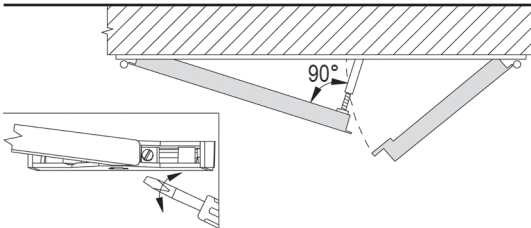


Figure E
(refers to PROGET FIRE RATED and MULTIPURPOSE doors, excluding Combo dB/GS and dB/GSV)

All double doors are shipped with the closing regulator RC/STD installed externally on the top frame (excluding those shipped with RC2). Follow the indications given in the drawing for positioning the closing regulator correctly.

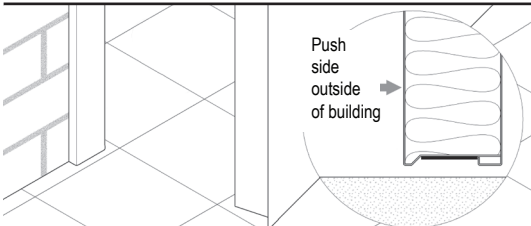


Figure F
(refers only to Combo Sa)

The Combo Sa does not require an automatic drop seal, since the classification for Sa smoke performances does not measure leaks at the bottom of the door leaf.

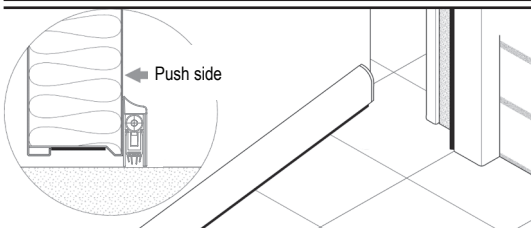


Figure G VERSION WITH AUTOMATIC DROP SEAL
(Combo S200/GS; Combo S200/GSV; Combo dB Sa/GS; Combo dB Sa/GSV; Combo dB/GS; Combo dB/GSV)

The Combo dB Sa/GS and dB Sa/GSV include the automatic drop seal for reaching acoustic performances. Therefore, install the drop seal following the provided installation instructions carefully (IF01) included in the product. Once installed, verify that the drop seal does not obstruct the movement of the door; follow the installation instructions for eventual adjustments.