

# INSTALLATION, USE AND MAINTENANCE HANDBOOK FOR REI 60, EI<sub>2</sub> 30 AND EI<sub>2</sub> 60 FIRE-RATED PROGET DOORS - INSTALLATION ONTO PLASTERBOARD WITH EMBRACING FRAME

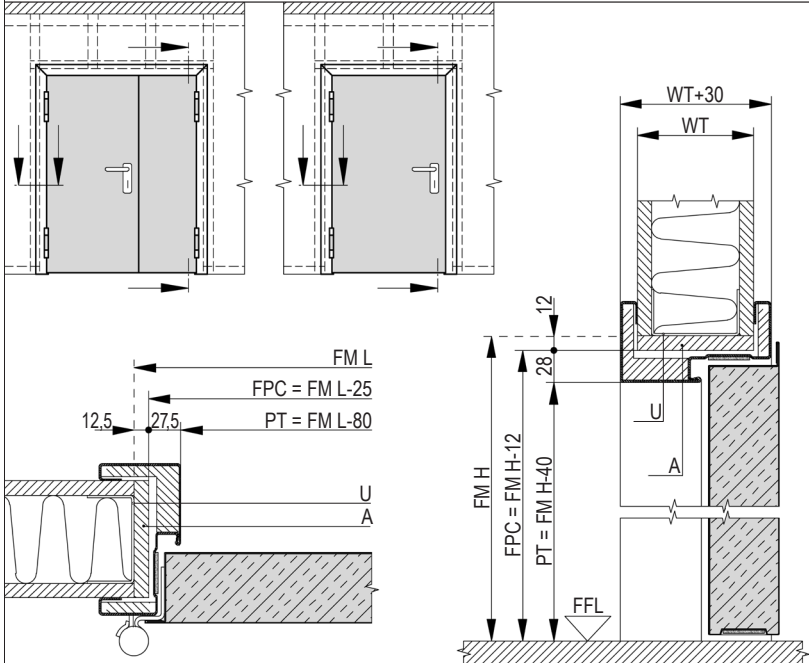
Homologation for REI 60:  
BZ050REI060P004F1

Test report for EI<sub>2</sub> 30:  
271 34064  
271 34065

Classification for EI<sub>2</sub> 60:  
C-11-00095-PR04

**NINZ** S.p.A.  
corso Trento, 2/A  
I-38061 ALA (TN) / ITALY

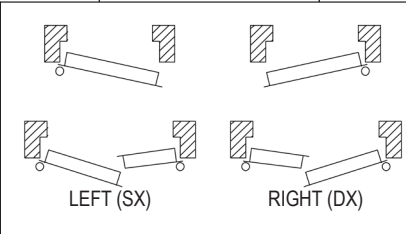
**I65-GB**  
5001502/2  
06/13 1/4



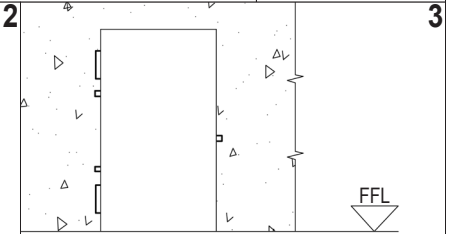
**ATTENTION**  
It is mandatory: to execute the plasterboard walls in accordance with the criteria described in the certification of the wall; to cover the wall opening with a single plasterboard clad of 12,5mm thickness (A) and to use (U) shaped standard profiles of 2mm thickness as a support on which to screw the door.

**KEY**

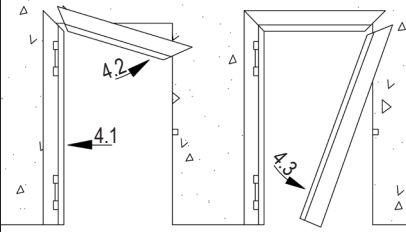
A	plasterboard clad of 12,5mm thickness
FFL	finished floor level
FM L	width order measurement
FM H	height order measurement
FPC	plasterboard wall opening
PT	net passage (doorframe)
U	"U" shaped profile of 2mm thickness sections: REI60-EI <sub>2</sub> 30=min.75/40; EI <sub>2</sub> 60=min.50/40
WT	wall thickness: REI60-EI <sub>2</sub> 30=min.100mm; EI <sub>2</sub> 60=min.75mm



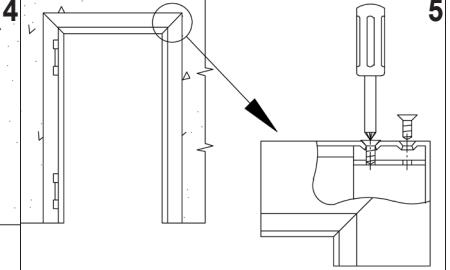
**For door with environmental characteristics see also the enclosed complementary installation instructions.**  
Verify the opening direction of the door.



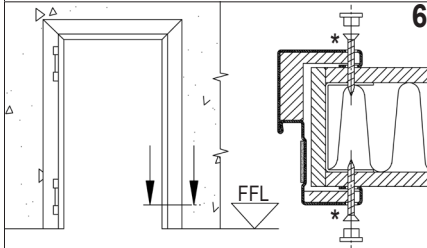
Establish the Finished Floor Level (FFL). Make small cuts for the hinges, bolts and lock in the respective positions.



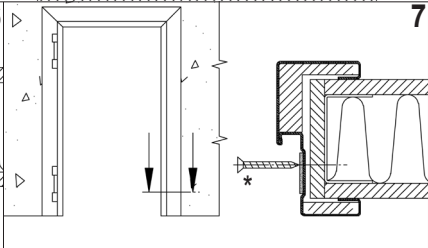
Insert into plasterboard wall opening the single profiles respecting the indicated sequence.



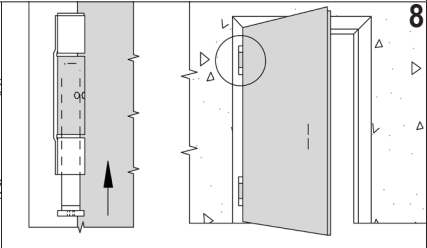
Join the 4 corners of the profiles with the supplied tapping screws.



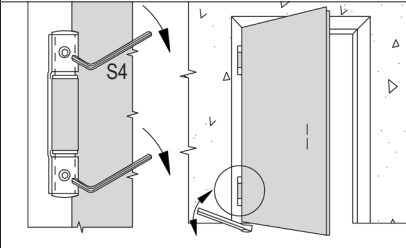
Immobilize the doorframe respecting the FFL and the plumb line, fasten it using the prepared holes and apply the stoppers.



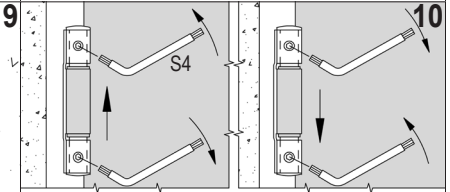
Additionally, fasten the doorframe through the prepared holes in the rebate. Add some spacers onto plasterboard if needed.



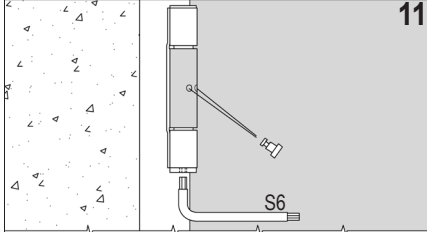
Unpack the door leaf without removing spacers and wedges, place it in the doorframe inserting the pivot in the spring hinge. (Pivot to be inserted in upper hinge for left and in lower hinge for right doors).



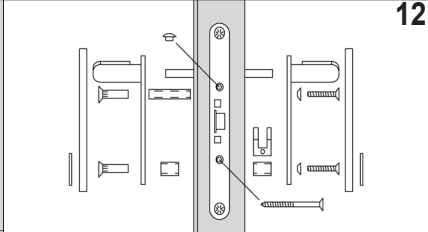
Close the door with the aid of a lever. Bring the main bearings in contact with each other through the use of the screw thread. Operation to be carried out with the maximum care and without forcing.



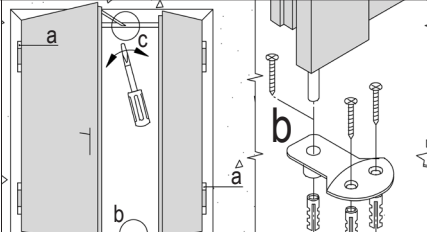
Remove the spacers between frame and leaf. Regulate the vertical leaf's position. To raise the door leaf: unscrew the upper blocking screw, screw on the lower one, screw on the upper one again. To lower the door leaf: unscrew the lower blocking screw, screw on the upper one. Operation to be carried out with the maximum care with the aid of a lever.



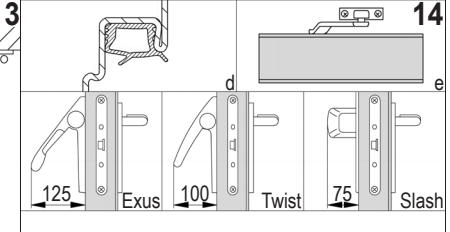
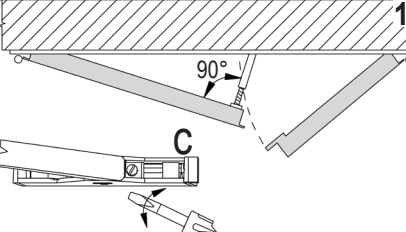
Wind up the spring hinge in the opening direction inserting the tension pin. Even if overhead doorclosers are installed, wind up the hinge spring anyway blocking it with the tension pin.



Mount the handle.



RC/STD (part. "c") obligatory only for fire-rated doors; RC2 obligatory for fire-rated doors with environmental characteristics. For two-leaved doors use the same assemble procedure adding: a) load two pivot with springs; b) install the catch set in the floor; c) in case of RC/STD adjust the closing regulator (arm position perpendicular to the main leaf).



Optional: d) rebate sealing - e) overhead doorcloser (the spring must be anyhow slightly loaded) - Exus, Twist or Slash panic bar.

\* screws to be used (not supplied): REI= drywall screws Ø3,5x35mm; EI<sub>2</sub> 30= drywall screws Ø3,5x45mm; EI<sub>2</sub> 60= self-tapping screws Ø5,5x32mm.

# INSTALLATION, USE AND MAINTENANCE HANDBOOK FOR REI 60, EI<sub>2</sub> 30 AND EI<sub>2</sub> 60 FIRE-RATED PROGET DOORS

## INSTALLATION ONTO PLASTERBOARD WITH EMBRACING FRAME

I65-GB 2/4

### GENERAL NOTES

**STANDARD:** the assemble instructions have to be followed in every detail to respect the test conditions and assure the perfect functioning of the door, including the self-closing. Furthermore a regular service is necessary.

**LIABILITY:** it is duty of the installer to follow the installation instructions in any detail, specifically point 6, 7 and 8 in order to guarantee the safety of the end-users.

**PLASTERBOARD PARTITIONS:** it is duty of the buyer to build the partitions according to the criteria described in the certification of the wall; to cover the wall opening with a single plasterboard clad of 12,5mm thickness; to use "U" shaped standard profiles of 2mm thickness as a support on which to screw the door and to take necessary precautions to avoid a mechanical resistance loss in case of partitions higher than 2700 mm.

**FINISHING:** the serial door is finished with an epoxy-polyester powder paint oven-baked at 180 °C. The surface is orange-skin and particularly resistant. In case an additional paint is desired we advise to follow these instructions:

- make smooth the surfaces with sandpaper and dust them;
- give a first hand of opaque 2 components epoxide using the product ALCEA EPOX 5203 / 0059 (beige);
- finish the surfaces with enamels or paints to your choice.

**CLEANING:** the doors are supplied from the factory clean and packed. We suggest to use a clothe and soaped water only. Do not scratch the surfaces.

**WARRANTY:** the manufacturer gives warranty as per Italian law (C.C.1495). Any claim for missing or damaged goods have to be recorded by inserting a written remark in the delivery notes and must be notified the maximum within eight days from the date of materials receipt.

### CURRENT CE MARKED ACCESSORIES FOR FIRE-RATED DOORS:

Std015 lock:	CE 0497/CPD/4265/11	- EN 12209:2003/AC	- 3 M 3 1 0 C 2 H A 2 0
Hinges:	CE 0789-CPD-2005	- EN 1935:2004	- 4 7 7 1 1 4 0 1 4
RC/STD closing regulator:	CE CPD-0425-1153	- EN 1158:2003	- 3 5 5/3 1 1 4

The CE marking of the Std 019 lock for inactive leaf of two-leaved doors is only valid if a panic bar or emergency handle is installed onto main leaf.

### USE AND MAINTENANCE INSTRUCTIONS FOR PROGET DOORS

All fire-rated doors located in escape routes need regular maintenance in order to verify that no damage occurred and that they close regularly. The scheduled maintenance shall guarantee that the leaf swings correctly and that the self closing mechanism works properly. The doors shall be kept free from any obstructions.

Any 5.000 opening cycles but at least every 6 months the following operations shall be carried out:

- lubricating the ball-bearing hinge;
- lubricating the spring hinge and the spring after removing the tension pin;
- wind up the spring inserting the tension pin. Verify that the closing force is sufficient to shut the door if opened to 30±2°;
- lubricating the lock and the latch.

For double leaf doorsets additional controls shall be carried out:

- verify the functionality of the secondary leaf's rods and lubricate its guide rail;
- clean the hole of the floor catch set;
- lubricate the lock and the self-locking device (top onto passive leaf);
- verify the regular functionality of the closing regulator (in case of RC/STD, the arm must be in perpendicular position to the main leaf); lubricate the mobile parts of the closing regulator.

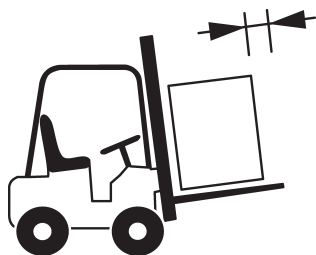
Verify the regular functionality of the doors accessories (handle, panic bar, overhead doorcloser etc.). Their mobile parts shall be lubricated too, following the dedicated instructions.

In case of irregular functioning of the door or its accessories contact an authorized installer or replace the damaged accessories.

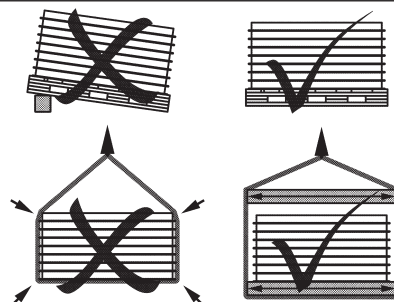
Note: for lubrication use viscous products.

### HANDLING AND STORAGE - COMPLAINTS

**Handling:** in case of handling with webbing slings/ropes, place them under the feet of the pallet; avoid to place them under the boards; avoid that the action of slings/ropes produces too much pressure upon the doors, by means of spacers interposed in the upper part. Do not handle the leaves using suction caps. **Storage:** it is duty of the company/person taking over the doors to store them in a suitable place so that they will be protected from the natural agents and from the direct sun rays. If during transportation or truck unloading it rains or snows on the doors it is necessary to remove immediately the nylon film from each leaf and doorframe put them in vertical position to dry appropriately. **Complaints:** in case of external visible defects on doors, they have to be marked in the copy of the transportation document to be returned to the forwarder and notified to the manufacturer by registered mail within 48 hours. We remember that according to our general conditions intrinsic defects have to be notified to the manufacturer within 8 days from the delivery date by registered mail. Goods with defects never have be utilized or assembled, they should be stored at disposal for controls by the manufacturer appointed person.



Move the materials with appropriate means.



Store and handle the materials with care.



Assemble by qualified staff only.



Do not expose the materials to the natural agents.



**PROGET DOORS  
INTERNAL USE**

**FIRE RATED:**

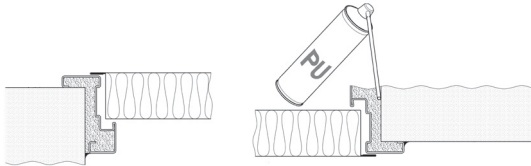
- Combo Sa
- Combo S200/GS; Combo S200/GSV
- Combo dB Sa/GS; Combo dB Sa/GSV

**MULTIPURPOSE:**

- Combo Sa
- Combo S200/GS; Combo S200/GSV
- Combo dB/GS; Combo dB/GSV

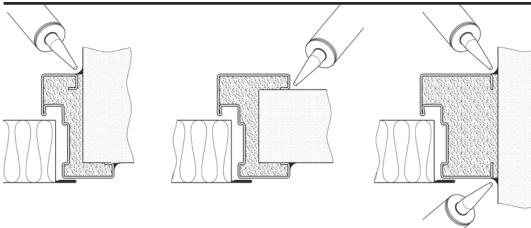
**ATTENTION:** For all warehousing, handling, installation, usage and maintenance related operations please follow carefully the INSTALLATION INSTRUCTIONS for PROGET doors and the present COMPLEMENTARY INSTALLATION INSTRUCTION.

In order to reach the additional performance characteristics (smoke control, acoustic insulation, thermal insulation, wind permeability, water tightness) please follow the INSTALLATION INSTRUCTIONS and the present COMPLEMENTARY INSTALLATION INSTRUCTIONS carefully.



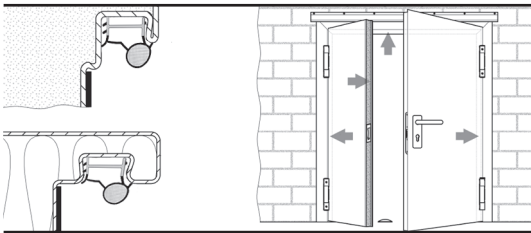
**Figure A**  
(refers only to PROGET MULTIPURPOSE doors)

After the installation of the frame, fill the space between wall and frame with polyurethane foam. In alternative use rockwool or plaster. When solidified, remove eventual residuals from overspraying



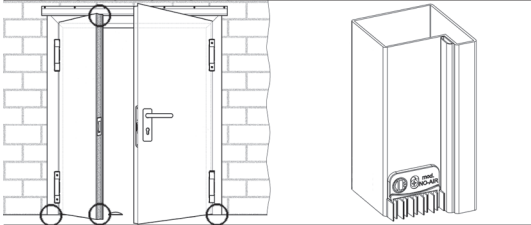
**Figure B**  
(refers to PROGET FIRE RATED and MULTIPURPOSE doors)

Seal the wall facing perimeter of the door frame on the push side of the door with neutral silicone (not supplied). In case of smoke control performances Sa and S200 and/or frame type Tunnel/Blockframe, seal on both sides of the frame.



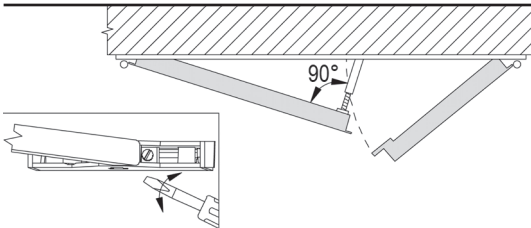
**Figure C**  
(refers to PROGET FIRE RATED and MULTIPURPOSE doors)

Cut the rubber gasket at 45 degree angles in the upper corners of the frame and insert with pressure into the respective groove of the frame (see arrows in the drawings). For double doors, press the rubber gasket also into the groove of the central upright of the secondary leaf with the profile facing in the correct direction (see drawing). For fire rated doors with double leaves only, cut the rubber gasket in proximity of the closing regulator RC/STD, making sure to cut only the necessary.



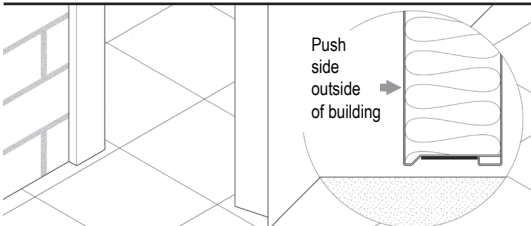
**Figure D**  
(refers to PROGET FIRE RATED and MULTIPURPOSE doors)

Install the rubber gasket "NO AIR" for all double doors shipped with your product. Position and install strictly as explained in the instructions (IF13-I) supplied with the KIT "NO AIR".



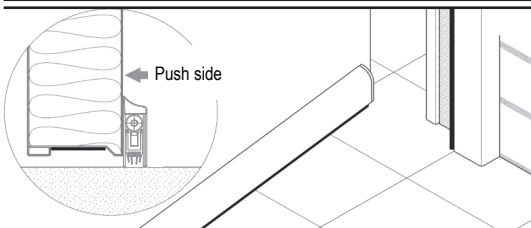
**Figure E**  
(refers to PROGET FIRE RATED and MULTIPURPOSE doors, excluding Combo dB/GS and dB/GSV)

All double doors are shipped with the closing regulator RC/STD installed externally on the top frame (excluding those shipped with RC2). Follow the indications given in the drawing for positioning the closing regulator correctly.



**Figure F**  
(refers only to Combo Sa)

The Combo Sa does not require an automatic drop seal, since the classification for Sa smoke performances does not measure leaks at the bottom of the door leaf.



**Figure G VERSION WITH AUTOMATIC DROP SEAL**  
(Combo S200/GS; Combo S200/GSV; Combo dB Sa/GS; Combo dB Sa/GSV; Combo dB/GS; Combo dB/GSV)

The Combo dB Sa/GS and dB Sa/GSV include the automatic drop seal for reaching acoustic performances. Therefore, install the drop seal following the provided installation instructions carefully (IF01) included in the product. Once installed, verify that the drop seal does not obstruct the movement of the door; follow the installation instructions for eventual adjustments.