

INSTALLATION, USE AND MAINTENANCE HANDBOOK FOR REI60, REI120, EI₂ 60, EI₂ 90, EI₂ 120 AND MULTIPURPOSE PROGET DOORS EXPANSION OR WALL SCREWS FASTENING

Homologations for REI doors:

BZ050REI060P031F1
BZ050REI120P032F1

EI₂ classification:

EI₂ 60: C-11-000095-PR04
EI₂ 90: P.V. RS-12-077
EI₂ 120: P.V. RS-06-092

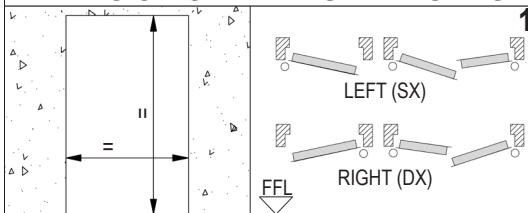
NINZ S.p.A.
corso Trento, 2/A
I-38061 ALA (TN) / ITALY

I67-GB

5001504/2

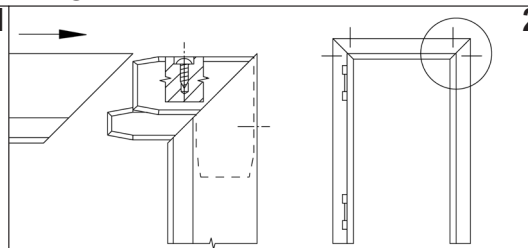
06/13

1/4

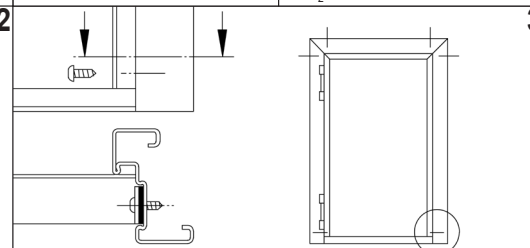


For door with environmental characteristics see also the enclosed complementary installation instructions.

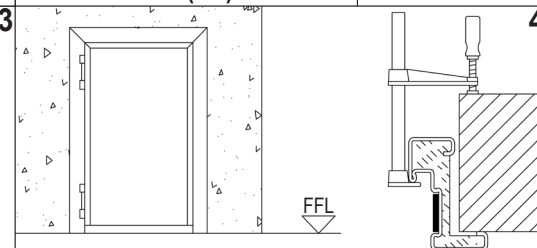
Unpack the doorframe and verify the correspondence between the wall opening and the dimension printed on the sticker applied on the frame. Establish the Finished Floor Level (FFL). Verify the opening direction of the door.



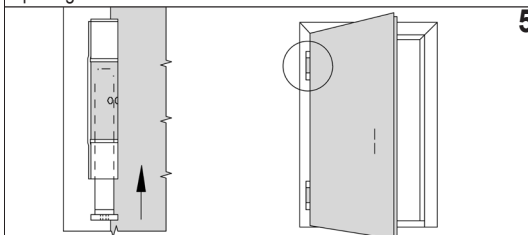
Set together the frame profiles with black joints, unfasten the screws present in the joints so that they enter the existing holes on frames until the connections get rigid.



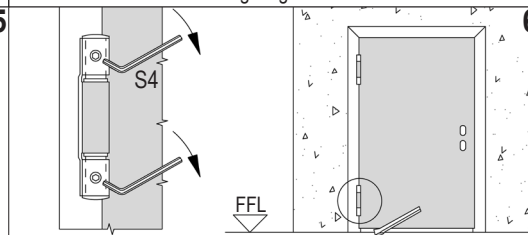
Unfasten the screws at the bottom part of the two jambs and fix them again inserting the jamb spacer, without removing the self expanding gasket (to be present in fire-rated doors only).



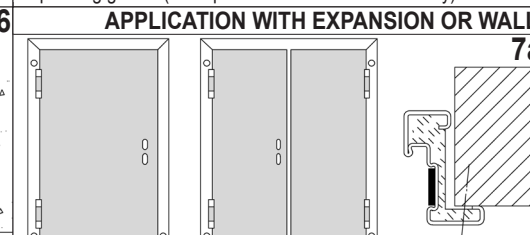
Insert the doorframe in the wall opening respecting the finished floor level and fasten it temporarily with clamps.



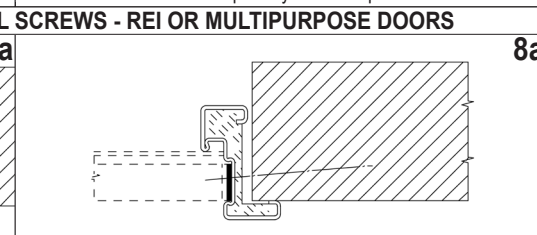
Unpack door leaf without removing spacers and wedges of PA. Place it in the doorframe inserting pivot with spring in upper hinge on left doors and in lower on right doors.



Close the door with the aid of a lever. Bring the main hinge bearings in contact with each other through the use of the screw thread. Operation to be carried out with the maximum care and without forcing. Verify the squareness of the whole door, respecting the FFL and the plumb line. Fix definitively the doorframe with the clamps.

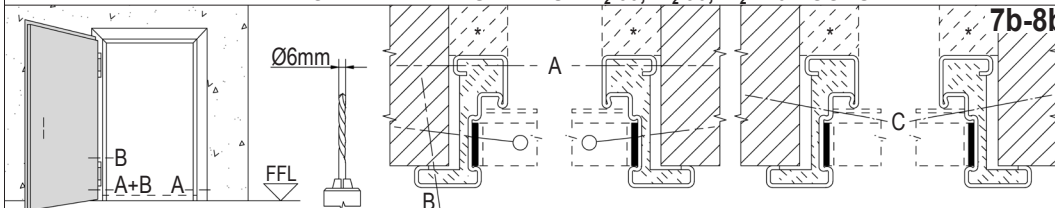


Drill through the frame in the points marked in the drawing (o). Fix it with screws and plastic dowels Ø8x40mm or wall screws T.C. Ø7,5mm. Screws and dowels not supplied.

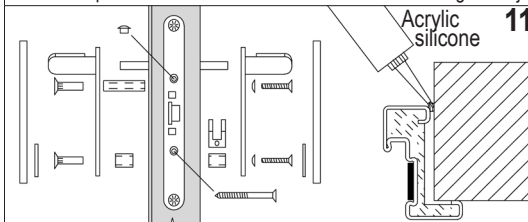


Open the door and fix the doorframe through the holes using expansion screws Ø10x124mm or wall screws T.C. Ø7,5mm. Insert spacers between the frame and the wall if necessary. Remove the lower spacer and use the holes below for a further fixing of the jambs. Expansion and wall screws are not supplied.

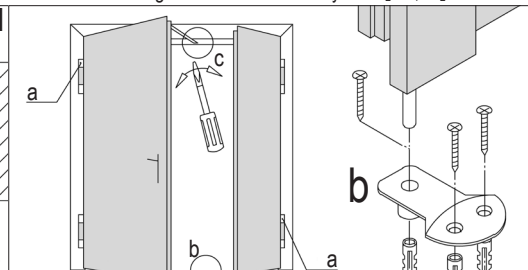
APPLICATION WITH WALL SCREWS - EI₂ 60, EI₂ 90, EI₂ 120 DOORS



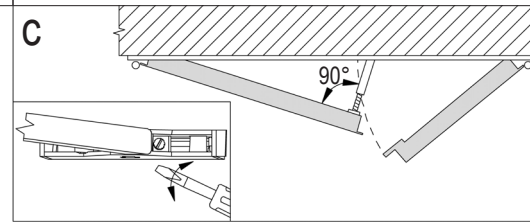
Perform the following drillings with a Ø6mm drill bit: the wall through the prepared holes (o); the jambs/wall at 65mm from FFL in the pos. A and above/below each lower hinge in the pos. B; the doorframe/wall in the pos. C, at an intermediate distance between the prepared holes. Fix through all holes using MRS-H Ø7x120mm type wall screws and insert spacers between the frame and the wall if necessary. Remove the lower spacer and use the holes below for a further fixing of the jambs. * concealing of concrete mandatory for EI₂ 90, EI₂ 120 doors.



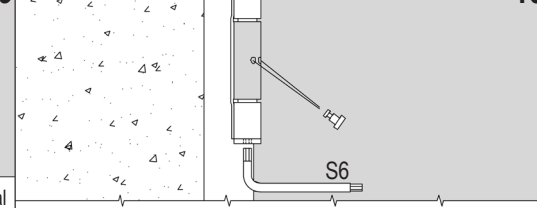
Mount the handle. Remove the sticker from the doorframe by means of hot air, or clean any remains using the product "Ecosolvente A/955" by "Recoil". The possible application of silicone (for aesthetic reasons) on the push side perimeter of the doorframe is at customer's expense.



RC/STD (part. "c") obligatory only for fire-rated doors; RC2 obligatory for fire-rated doors with environmental characteristics.

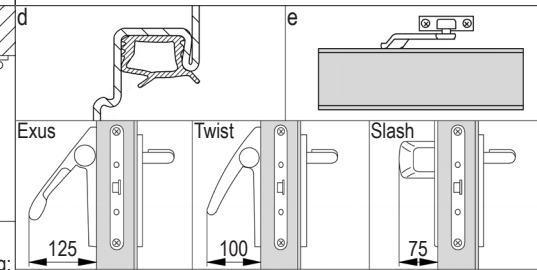


For two-leaved doors use the same assemble procedure adding: a) load two pivot with springs; b) install the catch set in the floor; c) in case of RC/STD adjust the closing regulator (arm position perpendicular to the main leaf).



Remove the spacers between frame and leaf. Regulate the vertical leaf's position. To raise the door leaf: unscrew the upper blocking screw, screw on the lower one, screw on the upper one again. To lower the door leaf: unscrew the lower blocking screw, screw on the upper one. Operation to be carried out with the maximum care with the aid of a lever.

Wind up the spring hinge in the opening direction inserting the tension pin. Even if self closing is not needed or overhead doorclosers are installed, wind up the hinge spring anyway blocking it with the tension pin. The self closing it is mandatory for fire-rated doors.



Optional: d) rebate sealing - e) overhead doorcloser (the spring must be anyhow slightly loaded) - Exus, Twist or Slash panic bar.

NOTE: multipurpose doors are not equipped with thermoexpanding gaskets, doorframe insulation and closing regulators.

INSTALLATION, USE AND MAINTENANCE HANDBOOK FOR REI60, REI120, EI₂ 60, EI₂ 90, EI₂ 120 AND MULTIPURPOSE PROGET DOORS EXPANSION OR WALL SCREWS FASTENING

I67-GB 2/4

GENERAL NOTES

STANDARD: the assemble instructions have to be followed in every detail to respect the test conditions and assure the perfect functioning of the door, including the self-closing for fire-rated doors. Furthermore a regular service is necessary. Multipurpose doors are not endowed with thermoexpanding gaskets, doorframe insulation and closing regulators.

LIABILITY: it is duty of the installer to follow the installation instructions in any detail, specifically point 6, 9 and 10 in order to guarantee the safety of the end-users.

MASONRY WORKS: it's the customer's responsibility to keep the wall integral particularly in the anchor points of the door, the application of silicon on the push side perimeter of the doorframe or to conceal the doorframe by concrete in case of EI₂ 90, EI₂ 120 doors and to execute the masonry works in accordance with the following criteria

- for REI doors according to standard UNI 9723.1990/A1;
 - for EI doors according to standard EN 1363-1 checking that the walls are made of blocks, bricks or homogeneous cement with a density of 1200±400 kg/m³ and a thickness of min. 150 mm.
- All this is particularly valid for fire-rated doors.

FINISHING: the serial door is finished with an epoxy-polyester powder paint oven-baked at 180 °C. The surface is orange-skin and particularly resistant. In case an additional paint is desired we advise to follow these instructions:

- make smooth the surfaces with sandpaper and dust them;
- give a first hand of opaque 2 components epoxide using the product ALCEA EPOX 5203 / 0059 (beige);
- finish the surfaces with enamels or paints to your choice.

CLEANING: the doors are supplied from the factory clean and packed. We suggest to use a clothe and soaped water only. Do not scratch the surfaces.

WARRANTY: the manufacturer gives warranty as per Italian law (C.C.1495). Any claim for missing or damaged goods have to be recorded by inserting a written remark in the delivery notes and must be notified the maximum within eight days from the date of materials receipt.

CURRENT CE MARKED ACCESSORIES FOR FIRE-RATED DOORS:

Std015 lock:	CE 0497/CPD/4265/11	- EN 12209:2003/AC	- 3 M 3 1 0 C 2 H A 2 0
Hinges:	CE 0789-CPD-2005	- EN 1935:2004	- 4 7 7 1 1 4 0 14
RC/STD closing regulator:	CE CPD-0425-1153	- EN 1158:2003	- 3 5 5/3 1 1 4

The CE marking of the Std 019 lock for inactive leaf of two-leaved doors is only valid if a panic bar or emergency handle is installed onto main leaf.

USE AND MAINTENANCE INSTRUCTIONS FOR PROGET DOORS

All fire-rated doors located in escape routes need regular maintenance in order to verify that no damage occurred and that they close regularly. The scheduled maintenance shall guarantee that the leaf swings correctly and that the self closing mechanism works properly. The doors shall be kept free from any obstructions.

Any 5.000 opening cycles but at least every 6 months the following operations shall be carried out:

- lubricating the ball-bearing hinge;
- lubricating the spring hinge and the spring after removing the tension pin;
- wind up the spring inserting the tension pin. Verify that the closing force is sufficient to shut the door if opened to 30±2°;
- lubricating the lock and the latch.

For double leaf doorsets additional controls shall be carried out:

- verify the functionality of the secondary leaf's rods and lubricate its guide rail;
 - clean the hole of the floor catch set;
 - lubricate the lock and the self-locking device (top onto passive leaf);
 - verify the regular functionality of the closing regulator (in case of RC/STD, the arm must be in perpendicular position to the main leaf);
- lubricate the mobile parts of the closing regulator.

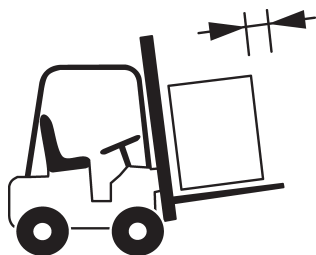
Verify the regular functionality of the doors accessories (handle, panic bar, overhead doorcloser etc.). Their mobile parts shall be lubricated too, following the dedicated instructions.

In case of irregular functioning of the door or its accessories contact an authorized installer or replace the damaged accessories.

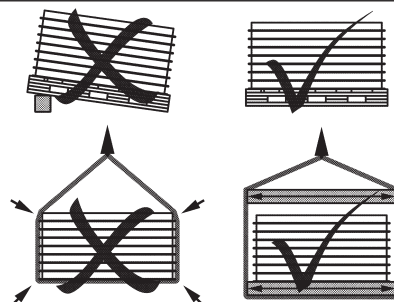
Note: for lubrication use viscous products.

HANDLING AND STORAGE - COMPLAINTS

Handling: in case of handling with webbing slings/ropes, place them under the feet of the pallet; avoid to place them under the boards; avoid that the action of slings/ropes produces too much pressure upon the doors, by means of spacers interposed in the upper part. Do not handle the leaves using suction caps. **Storage:** it is duty of the company/person taking over the doors to store them in a suitable place so that they will be protected from the natural agents and from the direct sun rays. If during transportation or truck unloading it rains or snows on the doors it is necessary to remove immediately the nylon film from each leaf and doorframe put them in vertical position to dry appropriately. **Complaints:** in case of external visible defects on doors, they have to be marked in the copy of the transportation document to be returned to the forwarder and notified to the manufacturer by registered mail within 48 hours. We remember that according to our general conditions intrinsic defects have to be notified to the manufacturer within 8 days from the delivery date by registered mail. Goods with defects never have be utilized or assembled, they should be stored at disposal for controls by the manufacturer appointed person.



Move the materials with appropriate means.



Store and handle the materials with care.



Assemble by qualified staff only.



Do not expose the materials to the naturals agents.



EXTERNAL PEDESTRIAN DOORS CE MARKED
according to EN 14351-1:2006 + A2:2016
Certificate CE 0425-CPR-002237

MULTIPURPOSE:

- Combo CE Est/SF
- Combo CE Est/GS; Combo CE Est /GSV

ATTENTION: For all warehousing, handling, installation, usage and maintenance related operations please follow carefully the INSTALLATION INSTRUCTIONS for PROGET doors and the present COMPLEMENTARY INSTALLATION INSTRUCTION. If the door has not been ordered with painting suitable for exterior use (UV protection), it is the customer's responsibility to provide an appropriate finishing following the instructions for repainting NINZ doors (see NINZ General brochure). In any case make sure to protect the door from direct contact with atmospheric agents. To protect the door from rain infiltrating the door leaf from above, install a canopy above the door. In case the door is used also as "emergency exit", the opening sense must be such that the door leaf swings outside of the building. In order to reach the additional performance characteristics and the tested values according to EN 14351-1:2006 + A2:2016 please follow the INSTALLATION INSTRUCTIONS and the present COMPLEMENTARY INSTALLATION INSTRUCTIONS carefully.

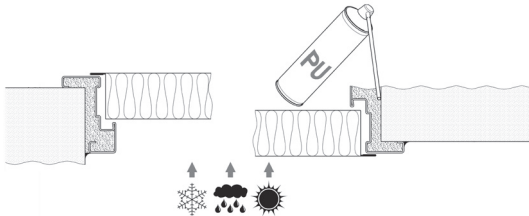


Figure A

(refers only to PROGET MULTIPURPOSE doors)

After the installation of the frame, fill the space between wall and frame with polyurethane foam. When solidified, remove eventual residuals from overspraying.

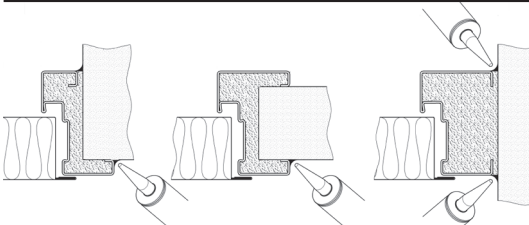


Figure B

(refers to PROGET MULTIPURPOSE doors)

Seal the wall facing perimeter of the door frame on the external side of the door with neutral silicone (not supplied). In case of smoke control performances Sa and S200 and/or frame type Tunnel/Blockframe, seal on both sides of the frame

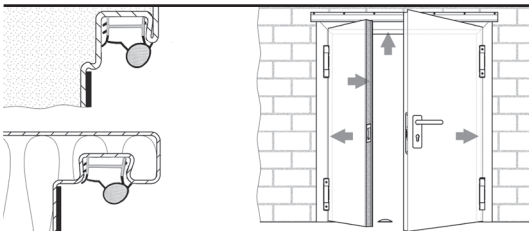


Figure C

(refers to PROGET MULTIPURPOSE doors)

Cut the rubber gasket at 45 degree angles in the upper corners of the frame and insert with pressure into the respective groove of the frame (see arrows in the drawings). For double doors, press the rubber gasket also into the groove of the central upright of the secondary leaf with the profile facing in the correct direction (see drawing).

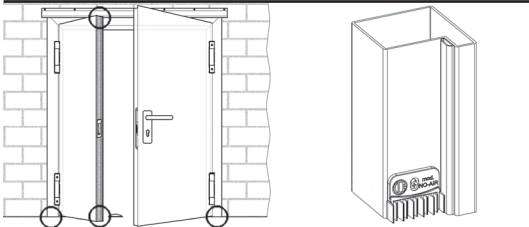


Figure D

(refers to PROGET MULTIPURPOSE doors)

Install the rubber gasket "NO AIR" for all double doors shipped with your product. Position and install strictly as explained in the instructions (IF13-I) supplied with the KIT "NO AIR".

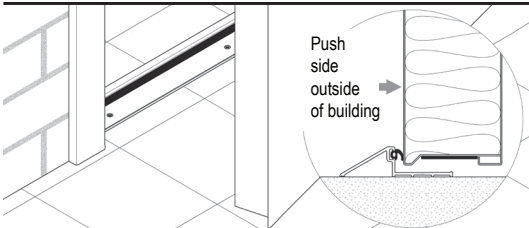


Figure E VERSION WITH FIXED LOWER ALU THRESHOLD

(Combo CE Est /SF)

Install the lower fixed alu threshold, and keep in mind that the performance characteristics are only reached with the door opening outside of the building. Position and install the threshold strictly as explained in the instructions (A170) supplied with the product.

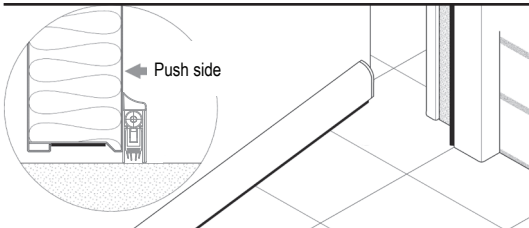


Figure F VERSION WITH AUTOMATIC DROP SEAL

(Combo Est /GS; Combo Est/GSV)

Install the drop seal following the provided installation instructions carefully (IF01) included in the product. Once installed, verify that the drop seal does not obstruct the movement of the door; follow the installation instructions for eventual adjustments.



**PROGET DOORS
INTERNAL USE**

FIRE RATED:

- Combo Sa
- Combo S200/GS; Combo S200/GSV
- Combo dB Sa/GS; Combo dB Sa/GSV

MULTIPURPOSE:

- Combo Sa
- Combo S200/GS; Combo S200/GSV
- Combo dB/GS; Combo dB/GSV

ATTENTION: For all warehousing, handling, installation, usage and maintenance related operations please follow carefully the INSTALLATION INSTRUCTIONS for PROGET doors and the present COMPLEMENTARY INSTALLATION INSTRUCTION.

In order to reach the additional performance characteristics (smoke control, acoustic insulation, thermal insulation, wind permeability, water tightness) please follow the INSTALLATION INSTRUCTIONS and the present COMPLEMENTARY INSTALLATION INSTRUCTIONS carefully.

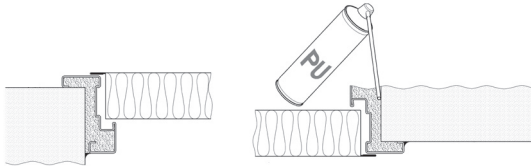


Figure A

(refers only to PROGET MULTIPURPOSE doors)

After the installation of the frame, fill the space between wall and frame with polyurethane foam. In alternative use rockwool or plaster. When solidified, remove eventual residuals from overspraying

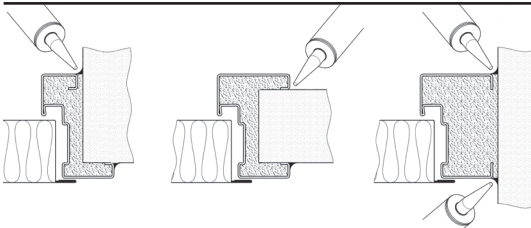


Figure B

(refers to PROGET FIRE RATED and MULTIPURPOSE doors)

Seal the wall facing perimeter of the door frame on the push side of the door with neutral silicone (not supplied). In case of smoke control performances Sa and S200 and/or frame type Tunnel/Blockframe, seal on both sides of the frame.

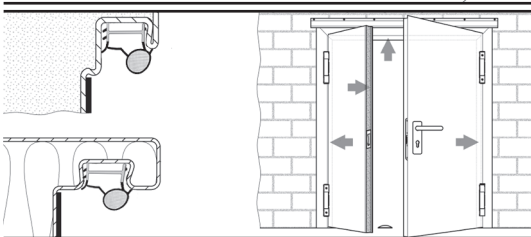


Figure C

(refers to PROGET FIRE RATED and MULTIPURPOSE doors)

Cut the rubber gasket at 45 degree angles in the upper corners of the frame and insert with pressure into the respective groove of the frame (see arrows in the drawings). For double doors, press the rubber gasket also into the groove of the central upright of the secondary leaf with the profile facing in the correct direction (see drawing). For fire rated doors with double leaves only, cut the rubber gasket in proximity of the closing regulator RC/STD, making sure to cut only the necessary.

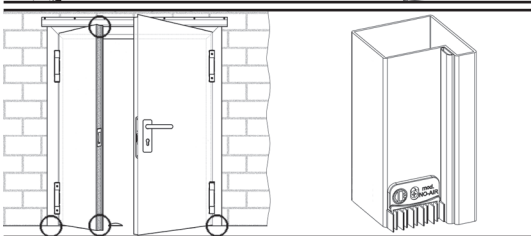


Figure D

(refers to PROGET FIRE RATED and MULTIPURPOSE doors)

Install the rubber gasket "NO AIR" for all double doors shipped with your product. Position and install strictly as explained in the instructions (IF13-I) supplied with the KIT "NO AIR".

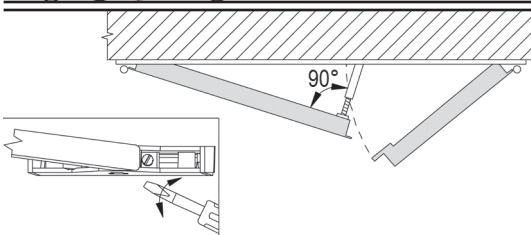


Figure E

(refers to PROGET FIRE RATED and MULTIPURPOSE doors, excluding Combo dB/GS and dB/GSV)

All double doors are shipped with the closing regulator RC/STD installed externally on the top frame (excluding those shipped with RC2). Follow the indications given in the drawing for positioning the closing regulator correctly.

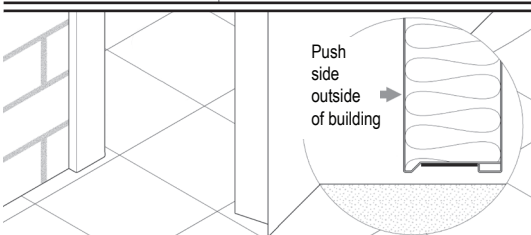


Figure F

(refers only to Combo Sa)

The Combo Sa does not require an automatic drop seal, since the classification for Sa smoke performances does not measure leaks at the bottom of the door leaf.

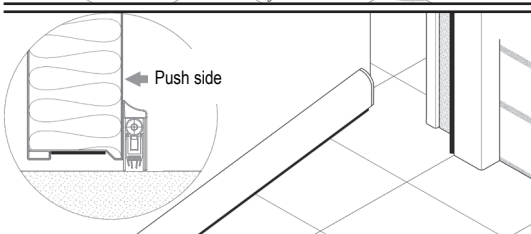


Figure G VERSION WITH AUTOMATIC DROP SEAL

(Combo S200/GS; Combo S200/GSV; Combo dB Sa/GS; Combo dB Sa/GSV; Combo dB/GS; Combo dB/GSV)

The Combo dB Sa/GS and dB Sa/GSV include the automatic drop seal for reaching acoustic performances. Therefore, install the drop seal following the provided installation instructions carefully (IF01) included in the product. Once installed, verify that the drop seal does not obstruct the movement of the door; follow the installation instructions for eventual adjustments.