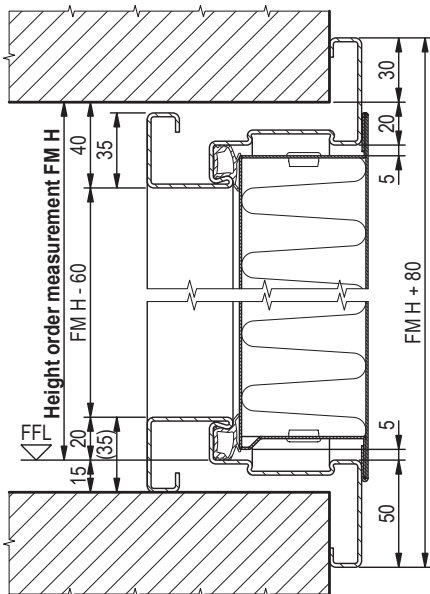
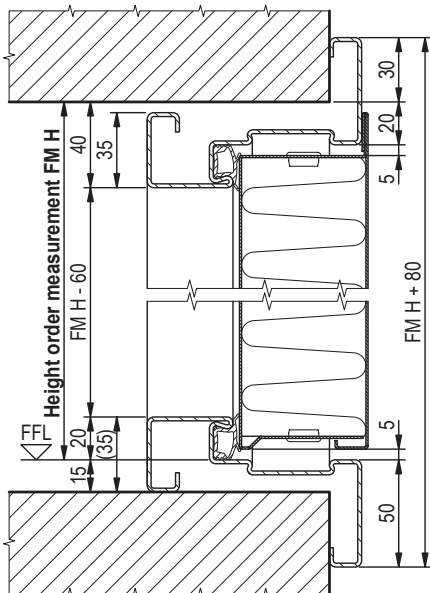


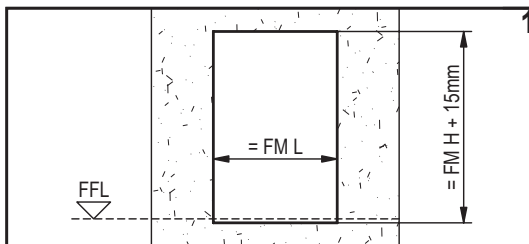
**INSTALLATION, USE AND MAINTENANCE HANDBOOK FOR REI 60, REI 120, EI<sub>2</sub> 60, EI<sub>2</sub> 120 AND MULTIPURPOSE PROGET DOORS, SINGLE LEAF, FRAME ON 4 SIDES**



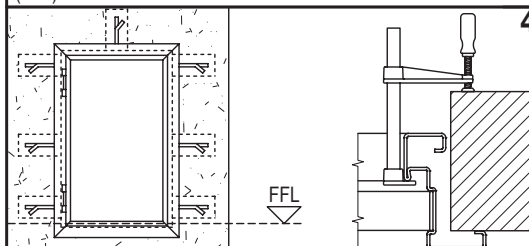
**DOOR LEAF WITH LOWER REBATE**



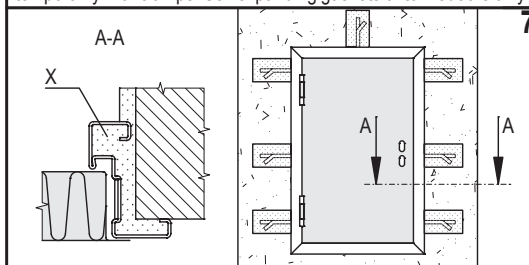
**DOOR LEAF WITHOUT LOWER REBATE**



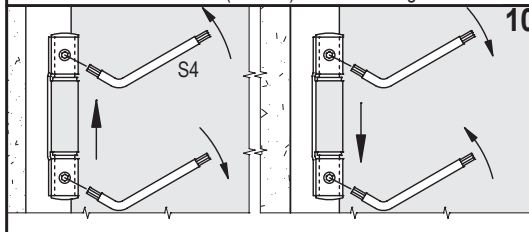
1  
Unpack the doorframe and verify the correspondence between the wall opening and the dimension printed on the sticker applied on the frame (FM H + 15mm!). Establish the Finished Floor Level (FFL).



4  
Bend up the frame-brackets and mark on the wall their positions respecting the FFL. Create the holes in the wall for the brackets. Insert the doorframe in the wall opening respecting the FFL and fasten it temporarily with clamps. Self expanding gaskets onto firedoors only.



7  
Fix the brackets with rapid setting cement. Fill up the space between frame and wall with mortar (detail X) without curving frame.



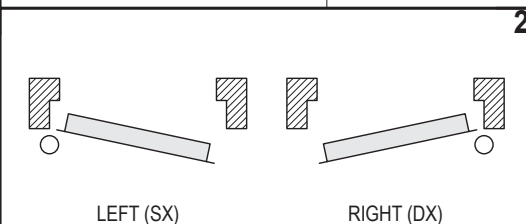
10  
To raise the door leaf: unscrew the upper socked set screw, screw on the lower one, screw on the upper one again.  
To lower the door leaf: unscrew the lower socked set screw, screw on the upper one. Operation to be carried out with the maximal care, with the aid of a lever.

Homologation no.: BZ050REI060P014F2  
BZ050REI120P002F1  
BZ050REI060P005F1 BZ050REI120P010F2  
BZ050REI060P012F2 BZ050REI120P011F2

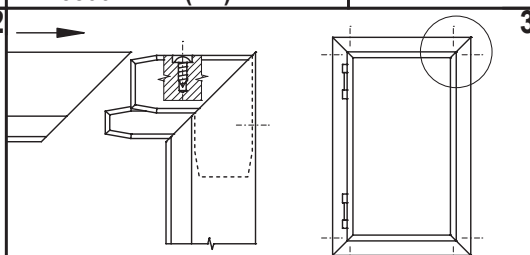
EI<sub>2</sub> classifications:  
EI<sub>2</sub> 60: C-11-000095-PR04  
EI<sub>2</sub> 120: P.V. RS-06-092

**NINZ S.p.A.**  
corso Trento, 2/A  
I-38061 ALA (TN) / ITALY

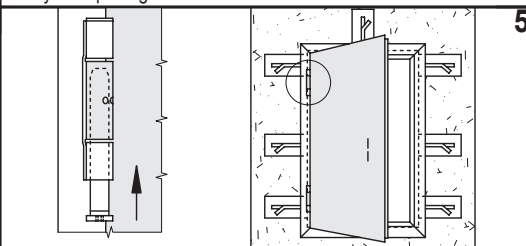
**180-GB**  
5001517/2  
09/15 1/2



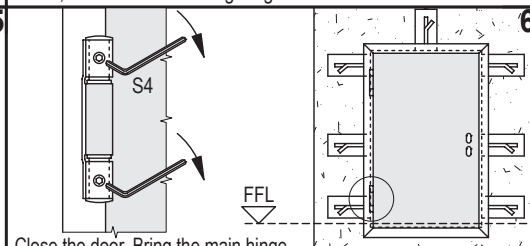
2  
Verify the opening direction of the door.



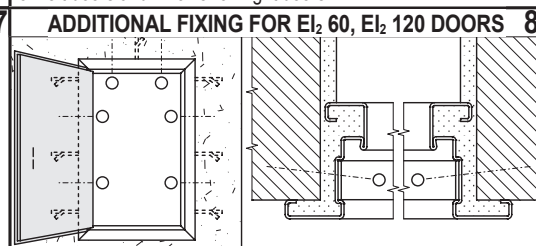
3  
Set together the doorframe profiles with the joints square; unfasten the screws present in the joints, so that they enter into holes of frame, until the connection get rigid.



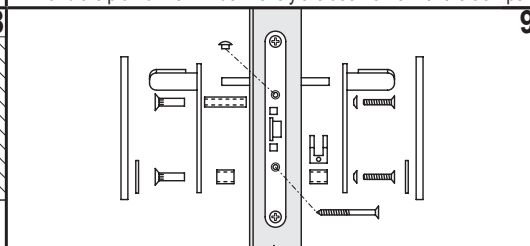
5  
Unpack door leaf without removing spacers and wedges of PA. Place it in the doorframe inserting pivot with spring in upper hinge on left doors and in lower on right doors.



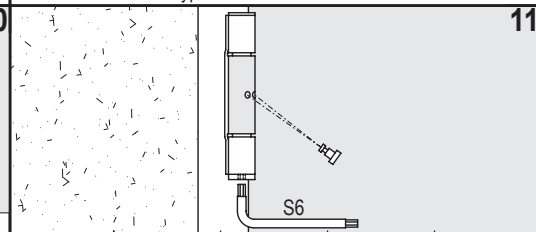
6  
Close the door. Bring the main hinge bearings in contact with each other through the use of the screw thread. Operation to be carried out with the maximum care and without forcing. Verify the squareness of the whole door, respecting the FFL and the plumb line. Fix definitively the doorframe with the clamps.



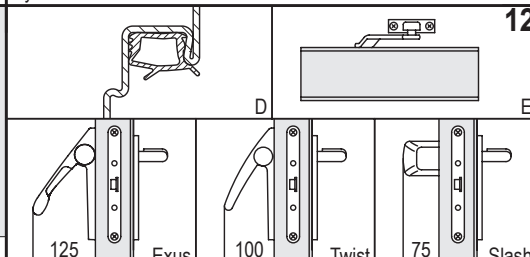
8  
**ADDITIONAL FIXING FOR EI<sub>2</sub> 60, EI<sub>2</sub> 120 DOORS**  
In case of EI<sub>2</sub> fire-rated door fasten additionally the doorframe, by drilling with a Ø6mm drill bit, at an intermediate distance between the frame-brackets in the (○) position and fix through all holes using MRS-H Ø7x120mm type wall screws.



9  
Remove the spacers between doorframe and leaf and assemble the handle. Remove the sticker from the doorframe by means of hot hair, or clean any remains using the product "Ecosolvente A/955" by "Recoll".



11  
Wind up the spring hinge in the opening direction, inserting the tension pin. Even if self closing is not needed or door closer is installed, wind up the spring hinge anyway, blocking it with the tension pin.



12  
Optional: D) rebate sealing - E) overhead doorcloser (the spring must be anyhow slightly loaded) - EXUS, TWIST or SLASH panic bar.

# INSTALLATION, USE AND MAINTENANCE HANDBOOK FOR REI 60, REI 120, EI<sub>2</sub> 60, EI<sub>2</sub> 120 AND MULTIPURPOSE PROGET DOORS, SINGLE LEAF, FRAME ON 4 SIDES

180-GB 2/2

## GENERAL NOTES

**STANDARD:** the assemble instructions have to be followed in every detail to respect the test conditions and assure the perfect functioning of the door, including the self-closing of fire-rated doors. Furthermore a regular service is necessary. Multipurpose doors are not endowed with thermoexpanding gaskets.

**LIABILITY:** it is duty of the installer to follow the installation instructions in any detail, specifically point 6, 10 and 11 in order to guarantee the safety of the end-users.

**MASONRY WORKS:** it is the customer's responsibility to keep the wall integral particularly in the anchor points of the door, to fill the space between doorframe and wall with mortar as indicated in box 7 (detail X) of the present instructions and to execute the masonry works in accordance with the following criteria:

- for REI doors according to standard UNI 9723.1990/A1;
  - for EI doors according to standard EN 1363-1 checking that the walls are made of blocks, bricks or homogeneous cement with a density of 1200±400 kg/m<sup>3</sup> and a thickness of min. 150mm.
- All this is particularly valid for fire-rated doors.

**FINISHING:** the serial door is finished with an epoxy-polyester powder paint oven-baked at 180 °C. The surface is orange-skin and particularly resistant. In case an additional paint is desired we advise to follow these instructions:

- make smooth the surfaces with sandpaper and dust them;
- apply a base coat of semi-gloss acrylic (suggested product: ACRILFIN SL series 567 + 20% by weight aliphatic hardener series E872003 - made by ELCROM, Italy);
- finish the surfaces with enamels or paints to your choice.

**CLEANING:** the doors are supplied from the factory clean and packed. We suggest to use a clothe and soaped water only. Do not scratch the surfaces.

**WARRANTY:** the manufacturer gives warranty as per Italian law (C.C.1495). Any claim for missing or damaged goods have to be recorded by inserting a written remark in the delivery notes and must be notified the maximum within eight days from the date of materials receipt.

## CURRENT C E MARKED ACCESSORIES FOR FIRE-RATED DOORS:

|              |  |                    |                         |
|--------------|--|--------------------|-------------------------|
| Std015 lock: |  0497/CPD/4265/11 | - EN 12209:2003/AC | - 3 M 3 1 0 C 2 H A 2 0 |
| Hinges:      |  0789-CPD-2005    | - EN 1935:2004     | - 4 7 7 1 1 4 0 1 4     |

## USE AND MAINTENANCE INSTRUCTIONS FOR PROGET DOORS

All fire-rated doors located in escape routes need regular maintenance in order to verify that no damage occurred and that they close regularly. The scheduled maintenance shall guarantee that the leaf swings correctly, that the self closing mechanism works properly and that doors close perfectly. Doors must be kept free from obstructions.

Any 5.000 opening cycles but at least every 6 months the following operations shall be carried out:

- lubricating the ball-bearing hinge;
- lubricating the spring hinge and the spring after removing the tension pin;
- wind up the spring inserting the tension pin. Verify that the closing force is sufficient to shut the door if opened to 30±2°;
- lubricating the lock and the latch bolt housing.

Verify the regular functionality of the doors accessories (handle, panic bar, overhead doorcloser etc.). Their mobile parts shall be lubricated too, following the dedicated instructions.

In case of irregular functioning of the door or its accessories contact an authorized installer or replace the damaged accessories.

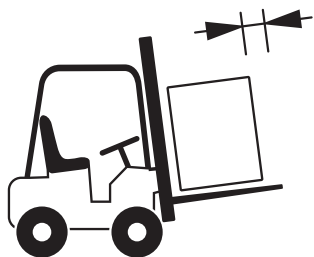
Note: for lubrication use viscous products.

## HANDLING AND STORAGE - COMPLAINTS

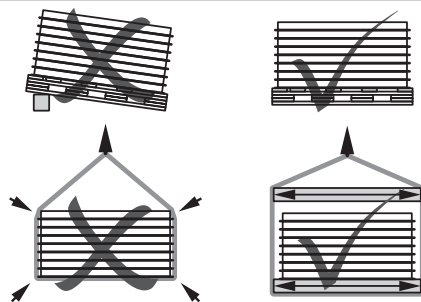
**HANDLING:** in case of handling with webbing slings/ropes, place them under the feet of the pallet; avoid to place them under the boards; avoid that the action of slings/ropes produces too much pressure upon the doors, by means of spacers interposed in the upper part. Do not handle the leaves using suction caps.

**STORAGE:** it is duty of the company/person taking over the doors to store them in a suitable place so that they will be protected from the natural agents and from the direct sun rays. If during transportation or truck unloading it rains or snows on the doors it is necessary to remove immediately the nylon film from each leaf and doorframe put them in vertical position to dry appropriately.

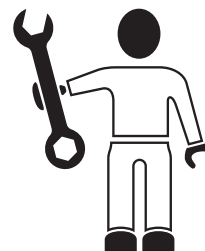
**COMPLAINTS:** in case of external visible defects on doors, they have to be marked in the copy of the transportation document to be returned to the forwarder and notified to the manufacturer by registered mail within 48 hours. We remember that according to our general conditions intrinsic defects have to be notified to the manufacturer within 8 days from the delivery date by registered mail. Goods with defects never have be utilized or assembled, they should be stored at disposal for controls by the manufacturer appointed person.



Move the materials with appropriate means.



Store and handle the materials with care.



Assemble by qualified staff only.



Do not expose the materials to the natural agents.