

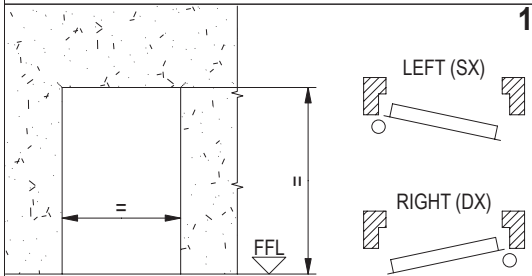
INSTALLATION, APPLICATION AND MAINTENANCE HANDBOOK FOR UNIVER MULTIPURPOSE, RE 90, REI 60 AND REI 120 SINGLE-LEAF DOORS

Homologation no.:
 BZ050REI120P021F2
 BZ050REI060P022F2
 BZ050REI120P023F2

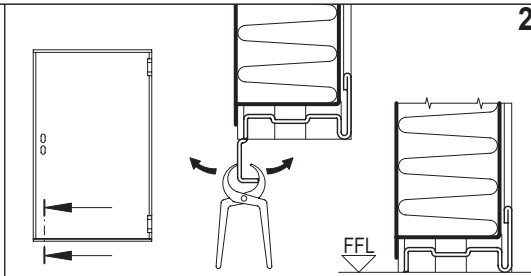
BZ050REI060P024F2
 BZ050REI060P028E1
 BZ050REI120P030F1

NINZ S.p.A.
 corso Trento, 2/A
 I-38061 ALA (TN) / ITALY

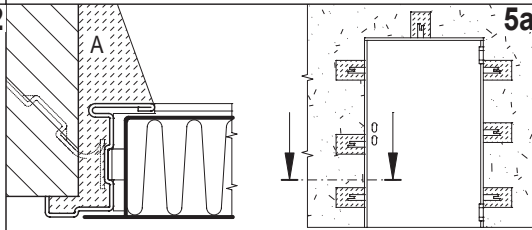
I51-GB
 5001015/2
 06/13 1/3



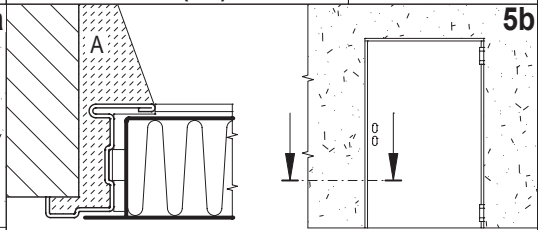
Unpack the door and verify the correspondence between the wall opening and the dimension printed on the sticker applied on the doorframe. Establish the Finished Floor Level (FFL) and the opening direction.



For door with environmental characteristics see also the enclosed complementary installation instructions.
 Remove with caution the cover profile from the threshold to prepare door installation at finished floor level (FFL).



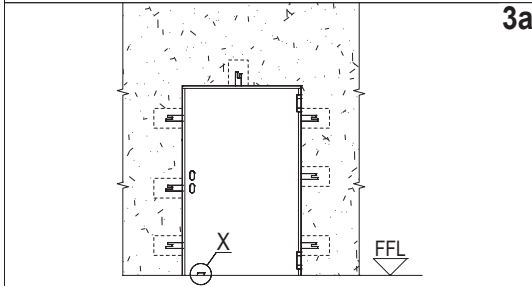
Fix the anchors with quick set cement. In case of fire-rated doors, fill up the space between doorframe and wall with mortar (detail A) without curving frame.



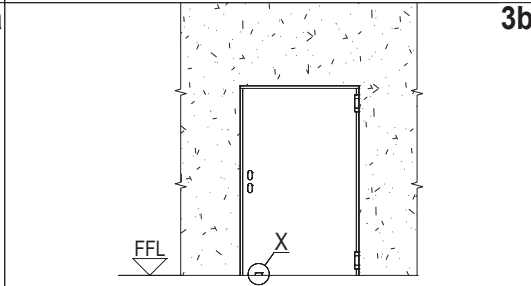
In case of fire-rated doors, fill up the space between doorframe and wall with mortar (detail A) without curving frame.

INSTALLATION WITH ANCHORS

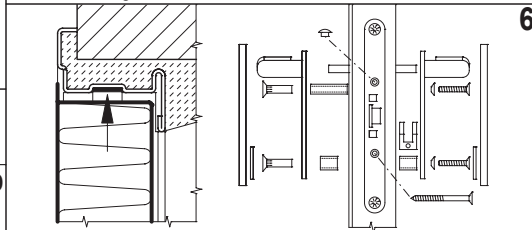
INSTALLATION WITH EXPANSION SCREWS



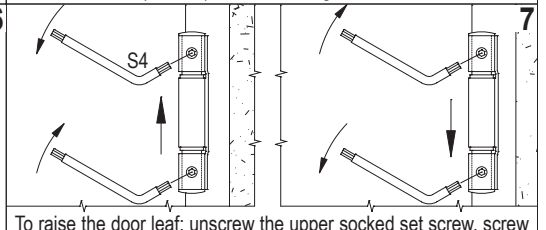
Bend up the anchor and mark on the wall their positions, respecting the FFL level. Create the holes in the wall for the anchors. Insert a spacer of 10mm under the leaf of doors with wall opening FM L \geq 1000mm (X).



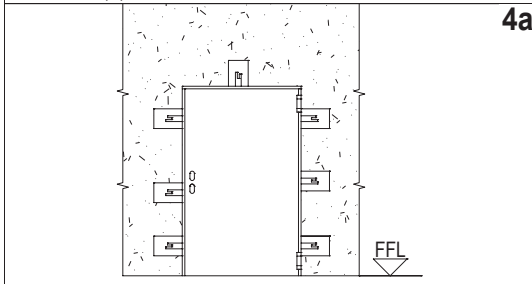
Fasten temporarily the door in the wall opening, respecting the plumb-line, the FFL level and the parallelism to the wall. Insert a spacer of 10mm under the leaf of doors with wall opening FM L \geq 1000mm (X).



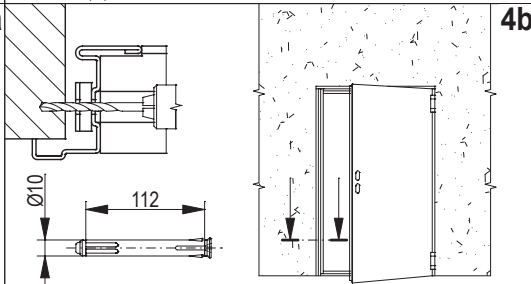
Remove the spacers between doorframe and leaf, install the handle and, in case of fire-rated doors, glue the self expanding gasket on to the top part of frame.



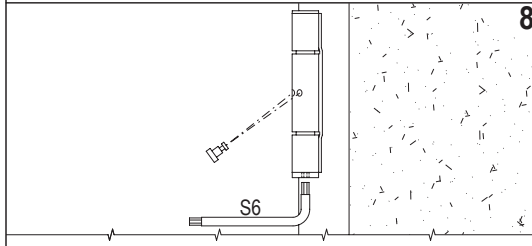
To raise the door leaf: unscrew the upper socked set screw, screw on the lower one, screw on the upper one again.
 To lower the door leaf: unscrew the lower socked set screw, screw on the upper one. Operation to be carried out with the maximal care, with the aid of a lever.



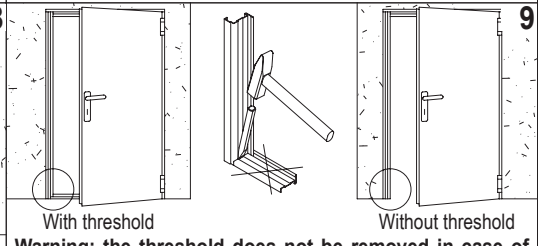
Fasten temporarily the door in the wall opening, respecting the plumb-line, the FFL level and the parallelism to the wall.



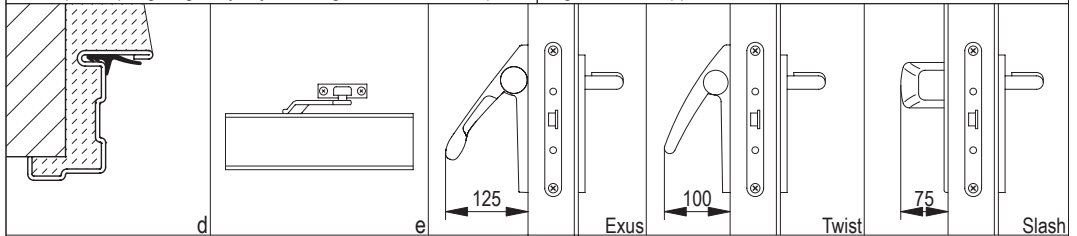
Open the door-leaf and fix the frame at presetted holes with expansion screws type Würth art. 0910436112 (expansion screws not supplied). Close again the door-leaf.



Wind up the spring hinge in the opening direction, inserting the tension pin. Even if self closing is not needed or door closer is installed, wind up the spring hinge anyway, blocking it with the tension pin.



Warning: the threshold does not be removed in case of door with environmental characteristics.
 In case the threshold is not needed, cut it with a chisel. Univer door is government approval with or without the bottom frame.



Accessories: d) rebate sealing - e) overhead door closer (the spring hinge must be anyhow slightly loaded) - EXUS, TWIST or SLASH panic bar.

INSTALLATION, APPLICATION AND MAINTENANCE HANDBOOK FOR UNIVER MULTIPURPOSE, RE 90, REI 60 AND REI 120 SINGLE-LEAF DOORS

I51-GB 2/3

GENERAL NOTES

STANDARD: the assemble instructions have to be followed in every detail to respect the test conditions and assure the perfect functioning of the door, including the self-closing. Furthermore a regular service according to Decree 10th March 1998 is necessary. Multipurpose doors are not endowed with thermoexpanding gaskets and closing regulators.

LIABILITY: It is duty of the installer to follow the installation instructions in any detail, specifically point 7 and 8, in order to guarantee the safety of the end-users.



MASONRY WORKS: It's under customer's responsibility to execute the brickworks according to the norm UNI 9723.1990/A1, to fill the frames with concrete as indicated in box 5a and 5b (detail A) of the present instructions and to keep the wall integral in particular in the anchor points of the door. This applies in particular to fire-rated doors.

FINISHING: the serial door is finished with an epoxy-polyester powder paint oven-baked at 180 °C. The surface is orange-skin and particularly resistant. In case an additional paint is desired we advise to follow these instructions:
 - make smooth the surfaces with sandpaper and dust them;
 - give a first hand of opaque 2 components epoxide using the product ALCEA EPOX 5203 / 0059 (beige);
 - finish the surfaces with enamels or paints to your choice.

CLEANING: the doors are supplied from the factory clean and packed. We suggest to use a clothe and soaped water only. Do not scratch the surfaces.

WARRANTY: the manufacturer gives warranty as per Italian law (C.C.1495). Any claim for missing or damaged goods have to be recorded by inserting a written remark in the delivery notes and must be notified the maximum within eight days from the date of materials receipt.

CURRENT CE MARKED ACCESSORIES FOR FIRE-RATED DOORS:

| | | | |
|--------------|--|--------------------|-------------------------|
| Std015 lock: |  0497/CPD/4265/11 | - EN 12209:2003/AC | - 3 M 3 1 0 C 2 H A 2 0 |
| Hinges: |  0789-CPD-2005 | - EN 1935:2004 | - 4 7 7 1 1 4 0 14 |

USE AND MAINTENANCE INSTRUCTIONS FOR UNIVER DOORS

All fire-rated doors or located in escape routes, need regular maintenance in order to verify that no damage occurred and that they close regularly. The scheduled maintenance shall guarantee that the leaf swings correctly and that the self closing mechanism works properly. Doors must be kept free from obstructions.

Any 5.000 opening cycles but at least every 6 months the following operations shall be carried out:

- lubricating the ball-bearing hinge;
- lubricating the spring hinge and the spring after removing the tension pin.
- wind up the spring inserting the tension pin. Verify that the closing force is sufficient to shut the door if opened to 30±2°;
- lubricating the lock and the latch.

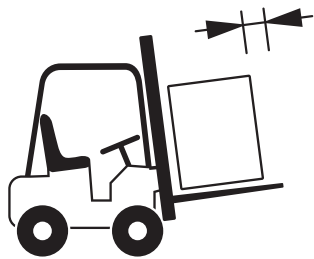
Verify the regular functionality of the doors accessories (handle, panic bar, overhead door closer etc.). Their mobile parts shall be lubricated too, following the dedicated instructions.

In case of irregular functioning of the door or its accessories contact an authorized installer or replace the damaged accessories.

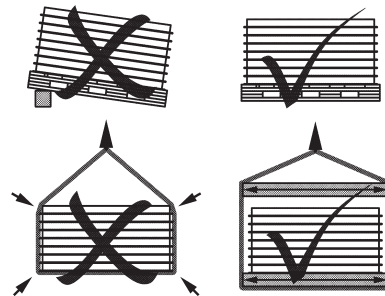
N.B.: for lubrication use viscous products.

HANDLING AND STORAGE - COMPLAINTS

Handling: in case of handling with webbing slings/ropes, place them under the feet of the pallet; avoid to place them under the boards; avoid that the action of slings/ropes produces too much pressure upon the doors, by means of spacers interposed in the upper part. Do not handle the leaves using suction caps. **Storage:** it is duty of the company/person taking over the doors to store them in a suitable place so that they will be protected from the natural agents and from the direct sun rays. If during transportation or truck unloading it rains or snows on the doors it is necessary to remove immediately the nylon film from each leaf and doorframe put them in vertical position to dry appropriately. **Complaints:** in case of external visible defects on doors, they have to be marked in the copy of the transportation document to be returned to the forwarder and notified to the manufacturer by registered mail within 48 hours. We remember that according to our general conditions intrinsic defects have to be notified to the manufacturer within 8 days from the delivery date by registered mail. Goods with defects never have be utilized or assembled, they should be stored at disposal for controls by the manufacturer appointed person.



Move the materials with appropriate means.



Store and handle the materials with care.



Assemble by qualified staff only.



Do not expose the materials to the natural agents.



EXTERNAL PEDESTRIAN DOORS CE MARKED
against EN 14351-1:2006 + A2:2016
Certificate CE 0425-CPR-002237

MULTIPURPOSE: - Combo CE Est

ATTENTION: If the door has not been ordered with painting suitable for exterior use (UV protection), it is the customer's responsibility to provide an appropriate finishing following the instructions for repainting NINZ doors (see NINZ General brochure).
In any case make sure to protect the door from direct contact with atmospheric agents. To protect the door from rain infiltrating the door leaf from above, install a canopy above the door.
For all warehousing, handling, installation, usage and maintenance related operations please follow the INSTALLATION INSTRUCTIONS and the present COMPLEMENTARY INSTALLATION INSTRUCTIONS carefully.

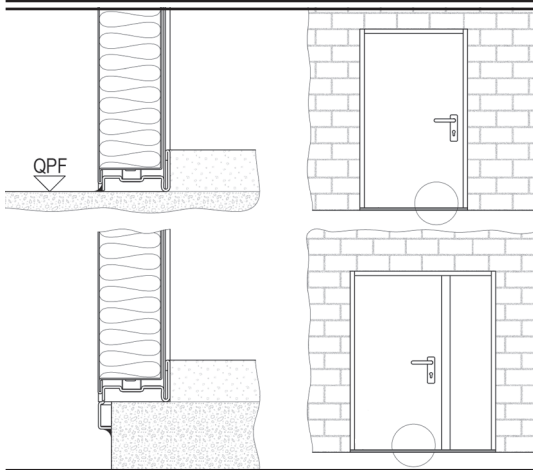


Figure A
(refers to UNIVER MULTIPURPOSE doors)

IMPORTANT: To reach the PERFORMANCES tested by the laboratory the lower threshold must not be removed.

In case the door is used also as "emergency exit", the opening sense must be such that the door leaf swings outside of the building. In addition, the inner floor level must be raised up to the upper limit of the lower threshold, as shown in the drawing. This is part of the mural works to be done by the customer.

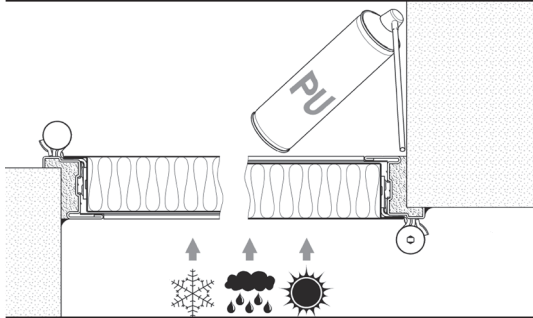


Figure B
(refers only to UNIVER MULTIPURPOSE doors)

After the installation of the frame, fill the space between wall and frame with polyurethane foam. When solidified, remove eventual residuals from overspraying.

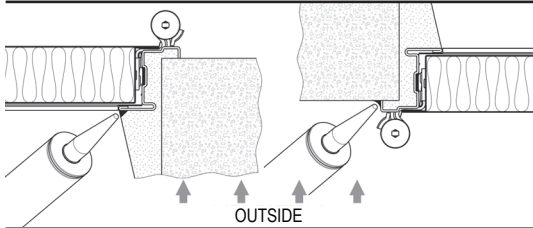


Figure C
(refers only to UNIVER MULTIPURPOSE doors)

Seal the outwards facing perimeter of the door frame with neutral silicone (not supplied).

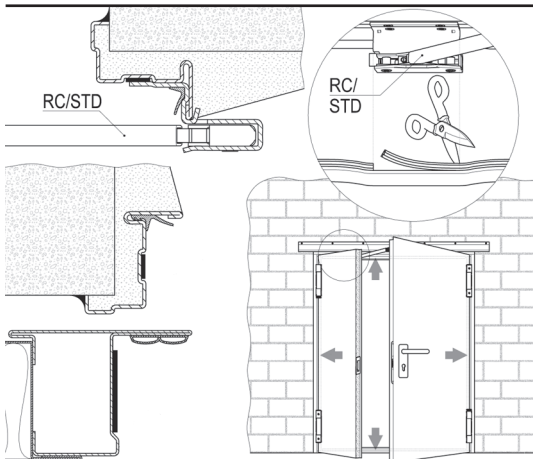


Figure D
(refers to UNIVER MULTIPURPOSE doors)

Cut the rubber gasket at 45 degree angles in all 4 corners of the frame and insert with pressure into the respective groove of the frame.

For double doors, fix the adhesive gasket to the central upright of the secondary leaf.